

## Product datasheet for TP309729L

### Hormone sensitive lipase (LIPE) (NM\_005357) Human Recombinant Protein

#### Product data:

|                                       |  |
|---------------------------------------|--|
| Product Type:                         | Recombinant Proteins   |
| Description:                          | Recombinant protein of human lipase, hormone-sensitive (LIPE), 1 mg          |
| Species:                              | Human  |
| Expression Host:                      | HEK293T  |
| Expression cDNA Clone or AA Sequence: | >RC209729 protein sequence<br><b>Red</b> =Cloning site <b>Green</b> =Tags(s) |

MEPGSKSVSRSDWQPEPHQRPITPLEPGPEKTPIAQPESKTLQGSNTQQKPASNQRPLTQQETPAQHDAE  
SQKEPRAQQKSASQEEFLAPQKPAPQQSPYIQRVLLTQQEAASQQGPGGLGKESITQQEPALRQRHVAQPG  
PGPGEPPPAAQQAESTPAAQAKPGAKREPSAPTESTSQTPEQSDKQTPVQGAQKQGSLELGFLLTKL  
QELSIQRSALWKALSEWVTDSESESDVGSSTDTSPATMGGMVAQGVKLGFKGKSGYKVMMSGYSGTSPH  
EKTSARNHRHYQDTASRLIHNMDLRTMTQSLVTLAEDNIAFFSSQGPGETAQRLSGVFAGVREQALGLEP  
ALGRLLGVAHLFDLDPETPANGYRSLVHTARCCLAHLLHKSRYVASNRRSIFFRSHNLAELEAYLAALT  
QLRALVYYAQRLLVTNRPGVLFEGDEGLTADFLREYVTLHKGCFYGRCLGFQFTPAIRPFLQTIYIGLV  
SFGHEHYKRNETGLSVAASSLFTSGRFAIDPELGAEFERITQNLVDVHFWKAFWNITEMEVLSSLANMASA  
TVRVSRLSLPPEAFEMPLTADPTLVTISPPLAHTGPGPVLVRLISCDLREGQDSEELSSLIKSNQGRS  
LELWPRPQQAPRSRLIVHFHGGGFVAQTSRSHEPYLKSWAQELGAPIISIDYSLAPEAPFPRALEECCFF  
AYCWAIKHCALLGSTGERICLAGDSAGGNLCFTVALRAAAYGVRVPDGMIAAYPATMLQPAASPSRLLSL  
MDPLLPLSVLSKCVSAYAGAKTEDHSNSDQKALGMMGLVRRDTALLRDFRLGASSWLNSFLELSGRKSKQ  
KMSEPIAEPMRRSVSEAALAPQGPLGTDSLKNLTLRDLSLRGNSETSSDTPPEMSLSAETLSPSTPSDVN  
FLLPPEDAGEEAEAKNELSPMDRGLGVRAAFPEGFHPRRSSQGATQMPLYSSPIVKNPFPMSPLLAPDSML  
KSLPPVHIVACALDPMDDSVMLARLRNLGQPVTLRVVEDLPHGFLTALACRETRQAAELCVERIRLV  
LTPPAGAGPSGETGAAGVDGGCGGRH

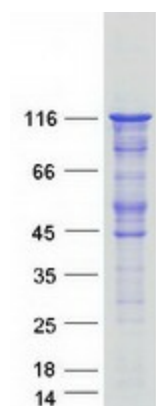
**TRTRPLEQKLISEEDLAANDILDYKDDDDKV**

|                |   |
|----------------|---|
| Tag:           | C-Myc/DDK   |
| Predicted MW:  | 116.4 kDa   |
| Concentration: | >0.05 µg/µL as determined by microplate BCA method          |
| Purity:        | > 80% as determined by SDS-PAGE and Coomassie blue staining |
| Buffer:        | 25 mM Tris-HCl, 100 mM glycine, pH 7.3, 10% glycerol        |



[View online »](#)

|                          |  |
|--------------------------|--|
| <b>Preparation:</b>      | Recombinant protein was captured through anti-DDK affinity column followed by conventional chromatography steps.   |
| <b>Note:</b>             | For testing in cell culture applications, please filter before use. Note that you may experience some loss of protein during the filtration process.   |
| <b>Storage:</b>          | Store at -80°C.  |
| <b>Stability:</b>        | Stable for 12 months from the date of receipt of the product under proper storage and handling conditions. Avoid repeated freeze-thaw cycles.  |
| <b>RefSeq:</b>           | <a href="#">NP_005348</a>  |
| <b>Locus ID:</b>         | 3991   |
| <b>UniProt ID:</b>       | <a href="#">Q05469</a> , <a href="#">A8K8W7</a>  |
| <b>RefSeq Size:</b>      | 3829   |
| <b>Cytogenetics:</b>     | 19q13.2  |
| <b>RefSeq ORF:</b>       | 3228   |
| <b>Synonyms:</b>         | AOMS4; FPLD6; HSL; LHS; REH  |
| <b>Summary:</b>          | The protein encoded by this gene has a long and a short form, generated by use of alternative translational start codons. The long form is expressed in steroidogenic tissues such as testis, where it converts cholesteryl esters to free cholesterol for steroid hormone production. The short form is expressed in adipose tissue, among others, where it hydrolyzes stored triglycerides to free fatty acids. [provided by RefSeq, Jul 2008] |
| <b>Protein Pathways:</b> | Insulin signaling pathway  |

**Product images:**

Coomassie blue staining of purified LIPE protein (Cat# [TP309729]). The protein was produced from HEK293T cells transfected with LIPE cDNA clone (Cat# [RC209729]) using MegaTran 2.0 (Cat# [TT210002]).