

Product datasheet for TP309729

Hormone sensitive lipase (LIPE) (NM_005357) Human Recombinant Protein

Product data:

Product Type:	Recombinant Proteins
Description:	Recombinant protein of human lipase, hormone-sensitive (LIPE), 20 µg
Species:	Human
Expression Host:	HEK293T
Expression cDNA Clone or AA Sequence:	>RC209729 protein sequence Red =Cloning site Green =Tags(s)

MEPGSKSVSRSDWQPEPHQRPITPLEPGPEKTPIAQPESKTLQGSNTQQKPASNQRPLTQQETPAQHDAE
SQKEPRAQQKSASQEEFLAPQKPAPQQSPYIQRVLLTQQEAASQQGPGGLGKESITQQEPALRQRHVAQPG
PGPGEPPPAAQQEAESTPAAQAKPGAKREPSAPTESTSQETPEQSDKQTPVQGAQKQGSLELGFLLTKL
QELSIQRSALWKALSEWVTDSESESDVGSSSDTDSPTMGMVAQGVKLGFKGKSGYKVMMSGYSGTSPH
EKTSARNHRHYQDTASRLIHNMDLRTMTQSLVTLAEDNIAFFSSQGPGETAQRLSGVFAGVREQALGLEP
ALGRLLGVAHLFDLDPETPANGYRSLVHTARCCLAHLLHKSRYVASNRRSIFFRSHNLAELEAYLAALT
QLRALVYYAQRLLVTNRPGVLFEGDEGLTADFLREYVTLHKGCFYGRCLGFFQFTPAIRPFLQTIYIGLV
SFGHEHYKRNETGLSVAASSLFTSGRFAIDPELGAEFERITQNLVDVHFWKAFWNITEMEVLSSLANMASA
TVRVSRLSLPPEAFEMPLTADPTLTVTISPPLAHTGPGPVLVRLISCDLREGQDSEELSSLIKSNQGRS
LELWPRPQQAPRSRLIVHFHGGGFVAQTSRSHEPYLKSWAQELGAPIISIDYSLAPEAPFPRALEECCFF
AYCWAIKHCALLGSTGERICLAGDSAGGNLCFTVALRAAAYGVRVPDGMIAAYPATMLQPAASPSRLLSL
MDPLLPLSVLSKCVSAYAGAKTEDHSNSDQKALGMMGLVRRDTALLRDFRLGASSWLNSFLELSGRKQ
KMSEPIAEPMRRSVSEAALAPQGPLGTDSLKNLTLRDLSLRGNSETSSDTPEMSLSAETLSPSTPSDVN
FLLPPEDAGEEAEAKNELSPMDRGLGVRAAFPEGFHPRRSSQATQMPLYSSPIVKNPFPMSPLLAPDSML
KSLPPVHIVACALDPMDDSVMLARRLRNLGQPVTLRVVEDLPHGFLTALACRETRQAAELCVERIRLV
LTPPAGAGPSGETGAAGVDGGCGGRH

TRTRPLEQKLISEEDLAANDILDYKDDDDKV

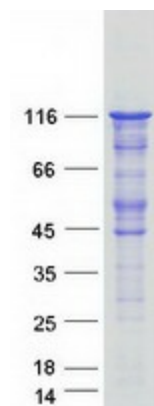
Tag:	C-Myc/DDK
Predicted MW:	116.4 kDa
Concentration:	>0.05 µg/µL as determined by microplate BCA method
Purity:	> 80% as determined by SDS-PAGE and Coomassie blue staining
Buffer:	25 mM Tris-HCl, 100 mM glycine, pH 7.3, 10% glycerol



[View online »](#)

Preparation:	Recombinant protein was captured through anti-DDK affinity column followed by conventional chromatography steps.
Note:	For testing in cell culture applications, please filter before use. Note that you may experience some loss of protein during the filtration process.
Storage:	Store at -80°C.
Stability:	Stable for 12 months from the date of receipt of the product under proper storage and handling conditions. Avoid repeated freeze-thaw cycles.
RefSeq:	NP_005348
Locus ID:	3991
UniProt ID:	Q05469 , A8K8W7
RefSeq Size:	3829
Cytogenetics:	19q13.2
RefSeq ORF:	3228
Synonyms:	AOMS4; FPLD6; HSL; LHS; REH
Summary:	The protein encoded by this gene has a long and a short form, generated by use of alternative translational start codons. The long form is expressed in steroidogenic tissues such as testis, where it converts cholesteryl esters to free cholesterol for steroid hormone production. The short form is expressed in adipose tissue, among others, where it hydrolyzes stored triglycerides to free fatty acids. [provided by RefSeq, Jul 2008]
Protein Pathways:	Insulin signaling pathway

Product images:



Coomassie blue staining of purified LIPE protein (Cat# TP309729). The protein was produced from HEK293T cells transfected with LIPE cDNA clone (Cat# [RC209729]) using MegaTran 2.0 (Cat# [TT210002]).