

Product datasheet for TP309724

Cytochrome C (CYCS) (NM_018947) Human Recombinant Protein

Product data:

| | |
|---------------------------------------|--|
| Product Type: | Recombinant Proteins |
| Description: | Recombinant protein of human cytochrome c, somatic (CYCS), nuclear gene encoding mitochondrial protein, 20 µg |
| Species: | Human |
| Expression Host: | HEK293T |
| Expression cDNA Clone or AA Sequence: | >RC209724 protein sequence Red=Cloning site Green=Tags(s) |
| | MGDVEKGGKKIFIMKCSQCHTVEKGGKHKHTGPNLHGLFGRKIGQAPGYSYTAANKNKGIIWGEDTLMEYLE NPKKYIPGTKMIFVGIKKKEERADLIAYLKKATNE |
| | TRTRPLEQKLISEEDLAANDILDYKDDDDKV |
| Tag: | C-Myc/DDK |
| Predicted MW: | 11.6 kDa |
| Concentration: | >0.05 µg/µL as determined by microplate BCA method |
| Purity: | > 80% as determined by SDS-PAGE and Coomassie blue staining |
| Buffer: | 25 mM Tris-HCl, 100 mM glycine, pH 7.3, 10% glycerol |
| Preparation: | Recombinant protein was captured through anti-DDK affinity column followed by conventional chromatography steps. |
| Note: | For testing in cell culture applications, please filter before use. Note that you may experience some loss of protein during the filtration process. |
| Storage: | Store at -80°C. |
| Stability: | Stable for 12 months from the date of receipt of the product under proper storage and handling conditions. Avoid repeated freeze-thaw cycles. |
| RefSeq: | NP_061820 |
| Locus ID: | 54205 |
| UniProt ID: | P99999 , G4XXL9 |
| RefSeq Size: | 5544 |



[View online »](#)

Cytogenetics: 7p15.3

RefSeq ORF: 315

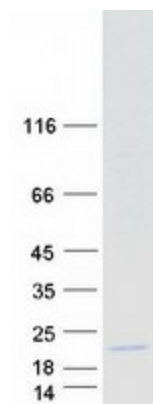
Synonyms: CYC; HCS; THC4

Summary: This gene encodes a small heme protein that functions as a central component of the electron transport chain in mitochondria. The encoded protein associates with the inner membrane of the mitochondrion where it accepts electrons from cytochrome b and transfers them to the cytochrome oxidase complex. This protein is also involved in initiation of apoptosis. Mutations in this gene are associated with autosomal dominant nonsyndromic thrombocytopenia. Numerous processed pseudogenes of this gene are found throughout the human genome. [provided by RefSeq, Jul 2010]

Protein Families: Druggable Genome

Protein Pathways: Alzheimer's disease, Amyotrophic lateral sclerosis (ALS), Apoptosis, Colorectal cancer, Huntington's disease, p53 signaling pathway, Parkinson's disease, Pathways in cancer, Small cell lung cancer, Viral myocarditis

Product images:



Coomassie blue staining of purified CYCS protein (Cat# TP309724). The protein was produced from HEK293T cells transfected with CYCS cDNA clone (Cat# [RC209724]) using MegaTran 2.0 (Cat# [TT210002]).