

Product datasheet for **TP309719L**

CDC26 (NM_139286) Human Recombinant Protein

Product data:

Product Type:	Recombinant Proteins
Description:	Recombinant protein of human cell division cycle 26 homolog (<i>S. cerevisiae</i>) (CDC26), 1 mg
Species:	Human
Expression Host:	HEK293T
Expression cDNA Clone or AA Sequence:	>RC209719 protein sequence Red =Cloning site Green =Tags(s)
	MLRRKPTRLELKLDDIEEFENIRKDLETRKKQKEDVEVVGSDGEGAIGLSSDPKSREQMINDRIGYKPKQ PKPNNRSSQFGSLEF
	TR TRPLEQKLISEEDLAANDILDYKDDDDKV
Tag:	C-Myc/DDK
Predicted MW:	9.6 kDa
Concentration:	>0.05 µg/µL as determined by microplate BCA method
Purity:	> 80% as determined by SDS-PAGE and Coomassie blue staining
Buffer:	25 mM Tris-HCl, 100 mM glycine, pH 7.3, 10% glycerol
Preparation:	Recombinant protein was captured through anti-DDK affinity column followed by conventional chromatography steps.
Note:	For testing in cell culture applications, please filter before use. Note that you may experience some loss of protein during the filtration process.
Storage:	Store at -80°C.
Stability:	Stable for 12 months from the date of receipt of the product under proper storage and handling conditions. Avoid repeated freeze-thaw cycles.
RefSeq:	NP_644815
Locus ID:	246184
UniProt ID:	Q8NHZ8 , A0A024R832
RefSeq Size:	885
Cytogenetics:	9q32



[View online »](#)

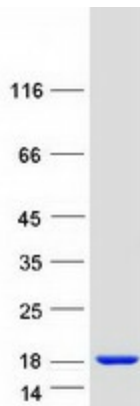
RefSeq ORF: 255

Synonyms: ANAPC12; APC12; C9orf17

Summary: The protein encoded by this gene is highly similar to *Saccharomyces cerevisiae* Cdc26, a component of cell cycle anaphase-promoting complex (APC). APC is composed of a group of highly conserved proteins and functions as a cell cycle-regulated ubiquitin-protein ligase. APC thus is responsible for the cell cycle regulated proteolysis of various proteins. [provided by RefSeq, Jul 2008]

Protein Pathways: Cell cycle, Oocyte meiosis, Progesterone-mediated oocyte maturation, Ubiquitin mediated proteolysis

Product images:



Coomassie blue staining of purified CDC26 protein (Cat# [TP309719]). The protein was produced from HEK293T cells transfected with CDC26 cDNA clone (Cat# [RC209719]) using MegaTran 2.0 (Cat# [TT210002]).