

Product datasheet for **TP309709M**

CLEC1 (CLEC1A) (NM_016511) Human Recombinant Protein

Product data:

Product Type:	Recombinant Proteins
Description:	Recombinant protein of human C-type lectin domain family 1, member A (CLEC1A), 100 µg
Species:	Human
Expression Host:	HEK293T
Expression cDNA Clone or AA Sequence:	>RC209709 protein sequence Red =Cloning site Green =Tags(s)
	<p>MQAKYSSTRDMLDDDGDTTMSLHSQASATTRHPEPRRTEHRAPSSTWRPVALTLLTLCLVLLIGLAALGL LFFQYYQLSNTGQDTISQMEERLGNTSQELQSLQVQNIKLAGSLQHVAEKLCRELYNKAGAHRCSPCTEQ WKWHGDNCYQFYKDSKSWEDCKYFCLSENSTMLKINKQEDLEFAASQSYSEFFYSYWTGLLRPDSGKAWL WMDGTPFTSELFHIIIDVTSRSDCVAILNGMIFSKDCKELKRCVCERRAGMVKPESLHVPPETLGEED</p> <p>TRTRPLEQKLISEEDLAANDILDYKDDDDKV</p>
Tag:	C-Myc/DDK
Predicted MW:	31.8 kDa
Concentration:	>0.05 µg/µL as determined by microplate BCA method
Purity:	> 80% as determined by SDS-PAGE and Coomassie blue staining
Buffer:	25 mM Tris-HCl, 100 mM glycine, pH 7.3, 10% glycerol
Preparation:	Recombinant protein was captured through anti-DDK affinity column followed by conventional chromatography steps.
Note:	For testing in cell culture applications, please filter before use. Note that you may experience some loss of protein during the filtration process.
Storage:	Store at -80°C.
Stability:	Stable for 12 months from the date of receipt of the product under proper storage and handling conditions. Avoid repeated freeze-thaw cycles.
RefSeq:	NP_057595
Locus ID:	51267
UniProt ID:	Q8NC01



[View online »](#)

RefSeq Size: 2781

Cytogenetics: 12p13.2

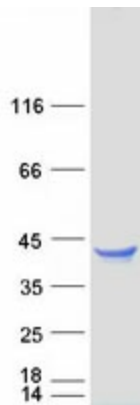
RefSeq ORF: 840

Synonyms: CLEC-1; CLEC1

Summary: This gene encodes a member of the C-type lectin/C-type lectin-like domain (CTL/CTLD) superfamily. Members of this family share a common protein fold and have diverse functions, such as cell adhesion, cell-cell signaling, glycoprotein turnover, and roles in inflammation and immune response. The encoded protein may play a role in regulating dendritic cell function. This gene is closely linked to other CTL/CTLD superfamily members on chromosome 12p13 in the natural killer gene complex region. Alternative splicing results in multiple transcript variants. [provided by RefSeq, Jul 2014]

Protein Families: Druggable Genome, Transmembrane

Product images:



Coomassie blue staining of purified CLEC1A protein (Cat# [TP309709]). The protein was produced from HEK293T cells transfected with CLEC1A cDNA clone (Cat# [RC209709]) using MegaTran 2.0 (Cat# [TT210002]).