

Product datasheet for **TP309708**

SIAE (NM_170601) Human Recombinant Protein

Product data:

Product Type:	Recombinant Proteins
Description:	Recombinant protein of human sialic acid acetyltransferase (SIAE), 20 µg
Species:	Human
Expression Host:	HEK293T
Expression cDNA	>RC209708 protein sequence
Clone or AA Sequence:	Red=Cloning site Green=Tags(s)

MVAPGLVLGLVPLLILWADRSAGIGFRFASYINNDMVLQKEPAGAVIWGFGTPGATVTVTLRQGQETIMK
KVTSVKAHSDTWMMVLDPMKPGGPFVMAQQTLEKINFTLRVHDLVFGDVWLCGQSNMQMTVLQIFNAT
RELSNTAAYQSVRILSVSPIQAEQELEDLVAVDLQWSKPTSEN LGHG YFKYMSAVCWLFGRHLYDTLQYP
IGLIASSWGGTPIEAWSSGRSLKACGVKQGSIPYDSVTGPKHSVLWNAMIHPLCNMTLKGVVWYQGES
NINYNTDLYNCTFPALIEDWRETFHRGSQGQTERFFPGLVQLSSDLSKKSSDDGFPQIRWHQTADFGYV
PNPKMPNTFMAVAMDLCDRDSPFGSIHPRDKQTVAYRLHLGARALAYGEKNLTFEGPLPEKIELLAHKGL
LNLTYQQIQVQKKDNKIFEISCCSDHRCKWLPASMTVSTQSLTLAIDSCHGTVALRYAWTTWPCEYK
QCPLYHPSSALPAPPFIATDQGPQGHQSNVAK

TRTRPLEQKLISEEDLAANDILDYKDDDDKV

Tag:	C-Myc/DDK
Predicted MW:	58.1 kDa
Concentration:	>0.05 µg/µL as determined by microplate BCA method
Purity:	> 80% as determined by SDS-PAGE and Coomassie blue staining
Buffer:	25 mM Tris-HCl, 100 mM glycine, pH 7.3, 10% glycerol
Preparation:	Recombinant protein was captured through anti-DDK affinity column followed by conventional chromatography steps.
Note:	For testing in cell culture applications, please filter before use. Note that you may experience some loss of protein during the filtration process.
Storage:	Store at -80°C.
Stability:	Stable for 12 months from the date of receipt of the product under proper storage and handling conditions. Avoid repeated freeze-thaw cycles.



[View online »](#)

RefSeq: [NP_733746](#)

Locus ID: 54414

UniProt ID: [Q9HAT2](#)

RefSeq Size: 2907

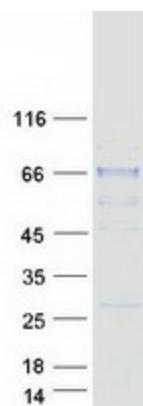
Cytogenetics: 11q24.2

RefSeq ORF: 1569

Synonyms: AIS6; CSE-C; CSEC; LSE; YSG2

Summary: This gene encodes an enzyme which removes 9-O-acetylation modifications from sialic acids. Mutations in this gene are associated with susceptibility to autoimmune disease 6. Multiple transcript variants encoding different isoforms, found either in the cytosol or in the lysosome, have been found for this gene.[provided by RefSeq, Feb 2011]

Product images:



Coomassie blue staining of purified SIAE protein (Cat# TP309708). The protein was produced from HEK293T cells transfected with SIAE cDNA clone (Cat# [RC209708]) using MegaTran 2.0 (Cat# [TT210002]).