

## Product datasheet for **TP309687**

### IL7R alpha (IL7R) (NM\_002185) Human Recombinant Protein

#### Product data:

**Product Type:** Recombinant Proteins  
**Description:** Recombinant protein of human interleukin 7 receptor (IL7R), 20 µg  
**Species:** Human  
**Expression Host:** HEK293T  
**Expression cDNA Clone or AA Sequence:** >RC209687 protein sequence  
**Red**=Cloning site **Green**=Tags(s)

MTILGTTFGMVFSLLQVWSGESGYAQNGLLEDAELDDYSFSCYSQLEVNQSQHSLTCAFEDPDVNITNLE  
FEICGALVEVKCLNFRKLQEIYFIETKKFLLIGKSNICVKVGEKSLTCKKIDLTIVKPEAPFDLSVIYR  
EGANDFVTFNTSHLQKKYVKVLMHDVAYRQEKDENKWITHVNLSSTKLTLQRKLQPAAMYEIKVR SIPD  
HYFKGFWSEWSPSYFRTPPEINNSSGEMDPILLTISILSFFSVALLVILACVLWKKRIKPIVWPSLPDHK  
KTLEHLCKKPRKLNVSFNPEFLDCQIHRVDDIARDEVEGFLQDTFFPQQLEESEKQRLGGDVQSPNCP  
SEVVITPESFGRDSSLTCLAGNVSACDAPILSPSRSLDCRESGKNGPHVYQDLLLSLGTNTSTLPPPF  
LQSGILTLPVAQGGPILTSLSGNQEEAYVTMSSFYQNNQ

**TRTRPLEQKLISEEDLAANDILDYKDDDDKV**

**Tag:** C-Myc/DDK  
**Predicted MW:** 49.4 kDa  
**Concentration:** >0.05 µg/µL as determined by microplate BCA method  
**Purity:** > 80% as determined by SDS-PAGE and Coomassie blue staining  
**Buffer:** 25 mM Tris-HCl, 100 mM glycine, pH 7.3, 10% glycerol  
**Preparation:** Recombinant protein was captured through anti-DDK affinity column followed by conventional chromatography steps.  
**Note:** For testing in cell culture applications, please filter before use. Note that you may experience some loss of protein during the filtration process.  
**Storage:** Store at -80°C.  
**Stability:** Stable for 12 months from the date of receipt of the product under proper storage and handling conditions. Avoid repeated freeze-thaw cycles.  
**RefSeq:** [NP\\_002176](#)



[View online »](#)

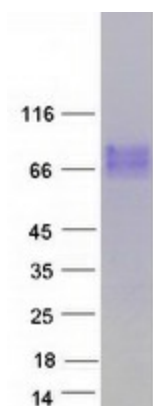
Locus ID:	3575
UniProt ID:	<a href="#">P16871</a>
RefSeq Size:	4617
Cytogenetics:	5p13.2
RefSeq ORF:	1377
Synonyms:	CD127; CDW127; IL-7R-alpha; IL7RA; ILRA

**Summary:** The protein encoded by this gene is a receptor for interleukin 7 (IL7). The function of this receptor requires the interleukin 2 receptor, gamma chain (IL2RG), which is a common gamma chain shared by the receptors of various cytokines, including interleukins 2, 4, 7, 9, and 15. This protein has been shown to play a critical role in V(D)J recombination during lymphocyte development. Defects in this gene may be associated with severe combined immunodeficiency (SCID). Alternatively spliced transcript variants have been found. [provided by RefSeq, Dec 2015]

**Protein Families:** Druggable Genome, ES Cell Differentiation/IPS, Transmembrane

**Protein Pathways:** Cytokine-cytokine receptor interaction, Hematopoietic cell lineage, Jak-STAT signaling pathway, Primary immunodeficiency

### Product images:



Coomassie blue staining of purified IL7R protein (Cat# TP309687). The protein was produced from HEK293T cells transfected with IL7R cDNA clone (Cat# [RC209687]) using MegaTran 2.0 (Cat# [TT210002]).