

Product datasheet for **TP309683M**

Grainyhead like protein 1 homolog (GRHL1) (NM_014552) Human Recombinant Protein

Product data:

Product Type:	Recombinant Proteins
Description:	Recombinant protein of human grainyhead-like 1 (Drosophila) (GRHL1), transcript variant 1, 100 µg
Species:	Human
Expression Host:	HEK293T
Expression cDNA Clone or AA Sequence:	>RC209683 protein sequence Red =Cloning site Green =Tags(s)

MTQEYDNKRPLVVLQNEALYPQRRSYTSEDEAWKSFLENPLTAATKAMMSINGDEDSAAALGLLYDYKVP
PRRRSSTAKPEVEHPEPDHSKRNSIPIVTEQPLISAGENRVQVLKNVPFIVLPHGNQLGIDKRGHLTA
PDTTVTVSIATMPHTSIKTETQPHGFAVGIPPAVYHPEPTERVVVFDRNLNTDQFSSGAQAPNAQRRTPD
STFSETFKEGVQEVFFPSDLSLRMPGMNSEDYVFDVSVSGNNFEYTLKASKSLRQKPGDSTMTYLNKGQFY
PITLKEVSSSEGIHHPISKVRSVIMVVFAEDKSREDQLRHWKYWHSRQHTAKQRCIDIADYKESFNTISN
VEEIAYNISFTWDINDEAKVFISVNCLSTDFSSQKGVKGLPLNIQIDTYSYNNRSNKPVHRAYCQIKVF
CDKGAERKIRDEERKQSKRKVSDVKVPLLPSPHMRMDITVFKPFIDLDTPVLFIPDVHFANLQRGTHVLP
IASEELEGEVSVLKRGPYGTEDDFAVPPSTKLARIEEPKRVLLYVRKESEEVFDALMLKTPSLKGLMEAI
SDKYDVPDHDKIGKIFKKCKKGGILVNMDDNIVKHYSNEDTFQLQIEEAGGSYKLTLEI

TRTRPLEQKLISEEDLAANDILDYKDDDDKV

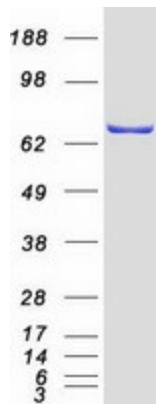
Tag:	C-Myc/DDK
Predicted MW:	69.9 kDa
Concentration:	>0.05 µg/µL as determined by microplate BCA method
Purity:	> 80% as determined by SDS-PAGE and Coomassie blue staining
Buffer:	25 mM Tris-HCl, 100 mM glycine, pH 7.3, 10% glycerol
Preparation:	Recombinant protein was captured through anti-DDK affinity column followed by conventional chromatography steps.
Note:	For testing in cell culture applications, please filter before use. Note that you may experience some loss of protein during the filtration process.
Storage:	Store at -80°C.



[View online »](#)

Stability:	Stable for 12 months from the date of receipt of the product under proper storage and handling conditions. Avoid repeated freeze-thaw cycles.
RefSeq:	NP_055367
Locus ID:	29841
UniProt ID:	Q9NZI5
RefSeq Size:	3610
Cytogenetics:	2p25.1
RefSeq ORF:	1854
Synonyms:	grainyhead-like 1 (Drosophila); LBP-32; LBP32; LBP protein 32; leader-binding protein 32; mammalian grainyhead; MGR; TFCP2L2; transcription factor CP2-like 2
Summary:	This gene encodes a member of the grainyhead family of transcription factors. The encoded protein can exist as a homodimer or can form heterodimers with sister-of-mammalian grainyhead or brother-of-mammalian grainyhead. This protein functions as a transcription factor during development. [provided by RefSeq, Jun 2009]
Protein Families:	Transcription Factors, Transmembrane

Product images:



Coomassie blue staining of purified GRHL1 protein (Cat# [TP309683]). The protein was produced from HEK293T cells transfected with GRHL1 cDNA clone (Cat# [RC209683]) using MegaTran 2.0 (Cat# [TT210002]).