

Product datasheet for **TP309680M**

IL23 (IL23A) (NM_016584) Human Recombinant Protein

Product data:

Product Type:	Recombinant Proteins
Description:	Recombinant protein of human interleukin 23, alpha subunit p19 (IL23A), 100 µg
Species:	Human
Expression Host:	HEK293T
Expression cDNA Clone or AA Sequence:	>RC209680 protein sequence Red =Cloning site Green =Tags(s) MLGSRAVMLLLLLPWTAQGRAVPGGSSPAWTQCQQLS QKLCTLAWSAHPVLVGHMDLREEGDEETTNDVPH IQCGDGDQPGLRDNSQFCLQRIHQGLIFYEKLLGSDIFTGEP SLLPDSPVQQLHASLLGLS QLLQPEGH HWETQQMPSLSQPWQRLLLLRFKILRN LQAFVAVAARVFAHGAATLSP TRTRPLEQKLISEEDLAANDILDYKDDDDKV
Tag:	C-Myc/DDK
Predicted MW:	18.6 kDa
Concentration:	>0.05 µg/µL as determined by microplate BCA method
Purity:	> 80% as determined by SDS-PAGE and Coomassie blue staining
Buffer:	25 mM Tris-HCl, 100 mM glycine, pH 7.3, 10% glycerol
Bioactivity:	Protease substrate (PMID: 29038472) Cell treatment (PMID: 29038472) MS digestion (PMID: 29038472)
Preparation:	Recombinant protein was captured through anti-DDK affinity column followed by conventional chromatography steps.
Note:	For testing in cell culture applications, please filter before use. Note that you may experience some loss of protein during the filtration process.
Storage:	Store at -80°C.
Stability:	Stable for 12 months from the date of receipt of the product under proper storage and handling conditions. Avoid repeated freeze-thaw cycles.
RefSeq:	NP_057668



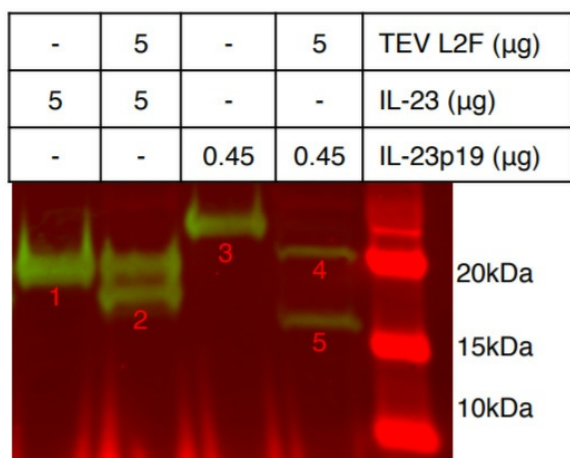
[View online »](#)

Locus ID: 51561
UniProt ID: [Q9NPF7](#)
RefSeq Size: 1049
Cytogenetics: 12q13.3
RefSeq ORF: 567
Synonyms: IL-23; IL-23A; IL23P19; P19; SGRF

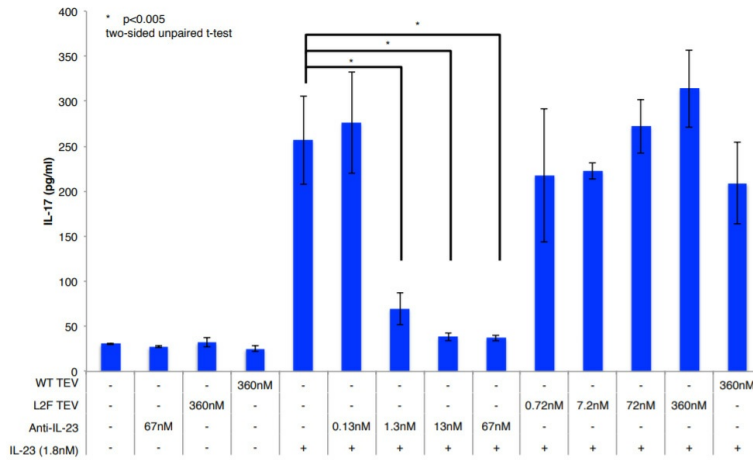
Summary: This gene encodes a subunit of the heterodimeric cytokine interleukin 23 (IL23). IL23 is composed of this protein and the p40 subunit of interleukin 12 (IL12B). The receptor of IL23 is formed by the beta 1 subunit of IL12 (IL12RB1) and an IL23 specific subunit, IL23R. Both IL23 and IL12 can activate the transcription activator STAT4, and stimulate the production of interferon-gamma (IFNG). In contrast to IL12, which acts mainly on naive CD4(+) T cells, IL23 preferentially acts on memory CD4(+) T cells. [provided by RefSeq, Jul 2008]

Protein Families: Druggable Genome, Secreted Protein
Protein Pathways: Cytokine-cytokine receptor interaction, Jak-STAT signaling pathway

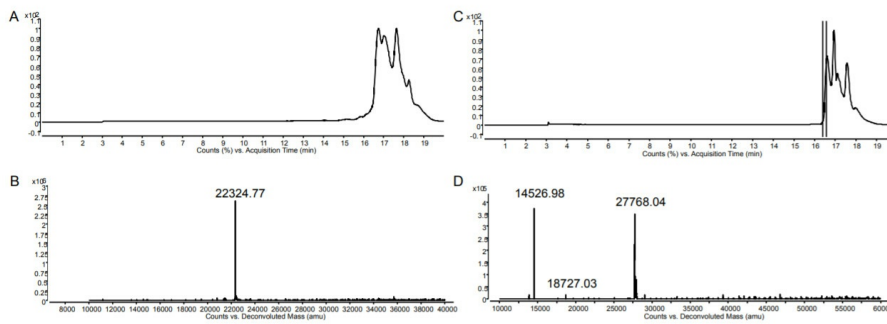
Product images:



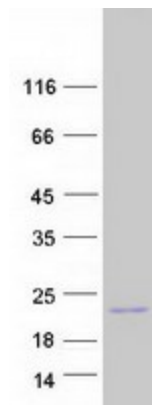
Identification of IL-23 cleavage sites by Western blot. IL-23 heterodimer (IL-23) and IL-23 monomer (IL-23p19) (OriGene [TP309680]) were incubated with or without TEV L2F. Reaction mixtures were subjected to Western blot with an anti-IL-23p19 monoclonal antibody. Figure cited from Nat Commun, PMID: 29038472



Cultured mouse mononuclear splenocytes secrete IL-17 in response to human IL-23 (OriGene [TP309680]) in the media. Addition of antibodies that neutralize IL-23 to the cell culture media prevents this response. Figure cited from Nat Commun, PMID: 29038472



Identification of two cleavage sites of TEV L2F protease within IL-23 monomer (OriGene [TP309680]) by mass spectrometry. Figure cited from Nat Commun, PMID: 29038472



Coomassie blue staining of purified IL23A protein (Cat# [TP309680]). The protein was produced from HEK293T cells transfected with IL23A cDNA clone (Cat# [RC209680]) using MegaTran 2.0 (Cat# [TT210002]).