

## Product datasheet for TP309679M

### IL12B (NM\_002187) Human Recombinant Protein

#### Product data:

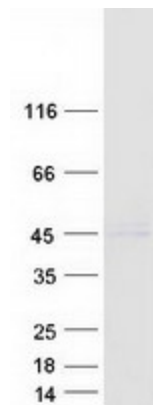
Product Type:	Recombinant Proteins
Description:	Recombinant protein of human interleukin 12B (natural killer cell stimulatory factor 2, cytotoxic lymphocyte maturation factor 2, p40) (IL12B), 100 µg
Species:	Human
Expression Host:	HEK293T
Expression cDNA Clone or AA Sequence:	>RC209679 protein sequence <b>Red</b> =Cloning site <b>Green</b> =Tags(s)
	MCHQQLVISWFSVLVFLASPLVAIWELKKD VYVWELDWYPDAPGEMVVLTCDTPEEDGITWTLDQSSEVLG SGKTLTIQVKEFGDAGQYTCHKGGEVLSHLLLLLHKKEDGIWSTDILKDQKEPKNKTFLRCEAKNYSGRF TCWWLTTISTDLTFSVKSSRGSSDPQGVTCGAATLSAERVRGDNKEYEYSVECQEDSACPAAEESLPIEV MVDVHKLKYENYTSSFFIRDIIPDKPPKLNQLKPLKNSRQVEVSWEYPDTWSTPHSYFSLTFCVQVQGK SKREKKDRVFTDKTSATVICRKNASISVRAQDRYSSSWSEWASVPCS
	<b>TRTRPLEQKLISEEDLAANDILDYKDDDDKV</b>
Tag:	C-Myc/DDK
Predicted MW:	34.6 kDa
Concentration:	>0.05 µg/µL as determined by microplate BCA method
Purity:	> 80% as determined by SDS-PAGE and Coomassie blue staining
Buffer:	25 mM Tris-HCl, 100 mM glycine, pH 7.3, 10% glycerol
Preparation:	Recombinant protein was captured through anti-DDK affinity column followed by conventional chromatography steps.
Note:	For testing in cell culture applications, please filter before use. Note that you may experience some loss of protein during the filtration process.
Storage:	Store at -80°C.
Stability:	Stable for 12 months from the date of receipt of the product under proper storage and handling conditions. Avoid repeated freeze-thaw cycles.
RefSeq:	<a href="#">NP_002178</a>
Locus ID:	3593



[View online »](#)

UniProt ID:	<a href="#">P29460</a>
RefSeq Size:	2347
Cytogenetics:	5q33.3
RefSeq ORF:	984
Synonyms:	CLMF; CLMF2; IL-12B; IMD28; IMD29; NKSF; NKSF2
Summary:	<p>This gene encodes a subunit of interleukin 12, a cytokine that acts on T and natural killer cells, and has a broad array of biological activities. Interleukin 12 is a disulfide-linked heterodimer composed of the 40 kD cytokine receptor like subunit encoded by this gene, and a 35 kD subunit encoded by IL12A. This cytokine is expressed by activated macrophages that serve as an essential inducer of Th1 cells development. This cytokine has been found to be important for sustaining a sufficient number of memory/effector Th1 cells to mediate long-term protection to an intracellular pathogen. Overexpression of this gene was observed in the central nervous system of patients with multiple sclerosis (MS), suggesting a role of this cytokine in the pathogenesis of the disease. The promoter polymorphism of this gene has been reported to be associated with the severity of atopic and non-atopic asthma in children. [provided by RefSeq, Jul 2008]</p>
Protein Families:	Druggable Genome, Secreted Protein, Transmembrane
Protein Pathways:	Allograft rejection, Cytokine-cytokine receptor interaction, Jak-STAT signaling pathway, RIG-I-like receptor signaling pathway, Toll-like receptor signaling pathway, Type I diabetes mellitus

### Product images:



Coomassie blue staining of purified IL12B protein (Cat# [TP309679]). The protein was produced from HEK293T cells transfected with IL12B cDNA clone (Cat# [RC209679]) using MegaTran 2.0 (Cat# [TT210002]).