

Product datasheet for TP309661

MRPL52 (NM_178336) Human Recombinant Protein

Product data:

| | |
|---------------------------------------|---|
| Product Type: | Recombinant Proteins |
| Description: | Recombinant protein of human mitochondrial ribosomal protein L52 (MRPL52), nuclear gene encoding mitochondrial protein, transcript variant 1, 20 µg |
| Species: | Human |
| Expression Host: | HEK293T |
| Expression cDNA Clone or AA Sequence: | >RC209661 protein sequence Red=Cloning site Green=Tags(s) MAALGTVLFTGVRRHCSAAAWAGGQWRLQQGLAANPSGYGPLTELPDCSYADGRPAPPMKGQLRRAER ETFARRVLLSQEMDAGLQAWQLRQKQLQEEQRKQENALKPKGASLKSPLPSQ TRTRPLEQKLISEEDLAANDILDYKDDDDKV |
| Tag: | C-Myc/DDK |
| Predicted MW: | 13.5 kDa |
| Concentration: | >0.05 µg/µL as determined by microplate BCA method |
| Purity: | > 80% as determined by SDS-PAGE and Coomassie blue staining |
| Buffer: | 25 mM Tris-HCl, 100 mM glycine, pH 7.3, 10% glycerol |
| Preparation: | Recombinant protein was captured through anti-DDK affinity column followed by conventional chromatography steps. |
| Note: | For testing in cell culture applications, please filter before use. Note that you may experience some loss of protein during the filtration process. |
| Storage: | Store at -80°C. |
| Stability: | Stable for 12 months from the date of receipt of the product under proper storage and handling conditions. Avoid repeated freeze-thaw cycles. |
| RefSeq: | NP_848026 |
| Locus ID: | 122704 |
| UniProt ID: | Q86TS9 |
| RefSeq Size: | 1123 |



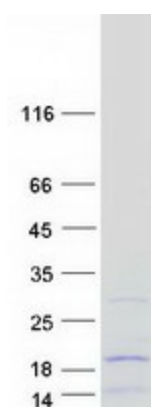
[View online »](#)

Cytogenetics: 14q11.2

RefSeq ORF: 369

Summary: Mammalian mitochondrial ribosomal proteins are encoded by nuclear genes and help in protein synthesis within the mitochondrion. Mitochondrial ribosomes (mitoribosomes) consist of a small 28S subunit and a large 39S subunit. They have an estimated 75% protein to rRNA composition compared to prokaryotic ribosomes, where this ratio is reversed. Another difference between mammalian mitoribosomes and prokaryotic ribosomes is that the latter contain a 5S rRNA. Among different species, the proteins comprising the mitoribosome differ greatly in sequence, and sometimes in biochemical properties, which prevents easy recognition by sequence homology. This gene encodes a 39S subunit protein which has no bacterial homolog. Multiple transcript variants encoding different protein isoforms were identified through sequence analysis. [provided by RefSeq, Jul 2008]

Product images:



Coomassie blue staining of purified MRPL52 protein (Cat# TP309661). The protein was produced from HEK293T cells transfected with MRPL52 cDNA clone (Cat# [RC209661]) using MegaTran 2.0 (Cat# [TT210002]).