

## Product datasheet for **TP309658M**

### ATL3 (NM\_015459) Human Recombinant Protein

#### Product data:

Product Type:	Recombinant Proteins
Description:	Recombinant protein of human atlastin GTPase 3 (ATL3), 100 µg
Species:	Human
Expression Host:	HEK293T
Expression cDNA Clone or AA Sequence:	>RC209658 representing NM_015459 Red=Cloning site Green=Tags(s)

MLSPQRVAAAASRGADDAMESSKPGPVQVVLVQKDQHSFELDEKALASILLQDHIRDLVWVSVAGAFR  
KGKSFILDFMLRLYSQKESGHSNWLGDPPEPLTGFSWRGGSDPETTGIQIWSEVFTVEKPGGKKVAVWL  
MDTQGAFDSQSTVKDCATIFALSTMTSSVQIYNLSQNIQEDDLQQLQLFTEYGRLAMDEIFQKPFQTLMF  
LVRDWSFPYEYSYGLQGGMAFLDKRLQVKEHQHEEIQNVRNHIHSCFSDVTCFLPHPLGQVATSPDFDG  
KLKDIAGEFKEQLQALIPYVLNPSKLMKEKINGSKVTCRGLLEYFKAYIKIYQGEDLPHPKSMLQATAEA  
NNLAAAASAKDIYNNMEEVCGGKPYLSPDILEEKHCEFKQLALDHFKTKKMGGKDFSFYQQELEE  
IKELYENFCKHNGSKNVFSTFRTPAVLFTGIVALYIASGLTGFIGLEVVAQLFNCMVGLLLIALLTWGYI  
RYSQYRELGGAIDFGAAYVLEQASSHIGNSTQATVRDAVGRPSMDKKAQ

TRTRPLEQKLISEEDLAANDILDYKDDDDKV

Tag:	C-Myc/DDK
Predicted MW:	60.4 kDa
Concentration:	>0.05 µg/µL as determined by microplate BCA method
Purity:	> 80% as determined by SDS-PAGE and Coomassie blue staining
Buffer:	25 mM Tris-HCl, 100 mM glycine, pH 7.3, 10% glycerol
Preparation:	Recombinant protein was captured through anti-DDK affinity column followed by conventional chromatography steps.
Note:	For testing in cell culture applications, please filter before use. Note that you may experience some loss of protein during the filtration process.
Storage:	Store at -80°C.
Stability:	Stable for 12 months from the date of receipt of the product under proper storage and handling conditions. Avoid repeated freeze-thaw cycles.



[View online >](#)

RefSeq: [NP\\_056274](#)

Locus ID: 25923

UniProt ID: [Q6DD88](#)

RefSeq Size: 2256

Cytogenetics: 11q13.1

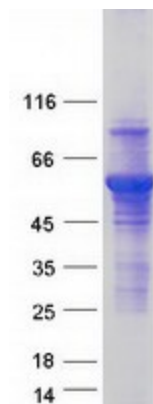
RefSeq ORF: 1623

Synonyms: HSN1F

**Summary:** This gene encodes a member of a family of dynamin-like, integral membrane GTPases. The encoded protein is required for the proper formation of the network of interconnected tubules of the endoplasmic reticulum. Mutations in this gene may be associated with hereditary sensory neuropathy type IF. Alternatively spliced transcript variants that encode distinct isoforms have been described. [provided by RefSeq, Feb 2014]

**Protein Families:** Transmembrane

### Product images:



Coomassie blue staining of purified ATL3 protein (Cat# [TP309658]). The protein was produced from HEK293T cells transfected with ATL3 cDNA clone (Cat# [RC209658]) using MegaTran 2.0 (Cat# [TT210002]).