

## Product datasheet for **TP309652L**

### Glutathione Reductase (GSR) (NM\_000637) Human Recombinant Protein

#### Product data:

**Product Type:** Recombinant Proteins

**Description:** Recombinant protein of human glutathione reductase (GSR), 1 mg

**Species:** Human

**Expression Host:** HEK293T

**Expression cDNA** >RC209652 protein sequence

**Clone or AA** **Red**=Cloning site **Green**=Tags(s)

**Sequence:**

MALLPRALSAGAGPSWRRRAARAFRGFLLLLPEPAALTRALSRAMACRQEPQPQGPAAAGAVASYDYDLVI  
GGGSGGLASARRAAELGARAAVVESHKLGTCVNVGCVPKKVMWNTAVHSEFMHDHADYGFPSCGKFNW  
RVIKEKRDAYVSRNLNAYQNNLTKSHIEIIRGHAAFTSDPKPTIEVSGKKYTAPHILIATGGMPSTPHES  
QIPGASLGITSDGFFQLEELPGRSVIVGAGYIAVEMAGILSALGSKTSLMIRHDKVLRFSFDSMISTNCTE  
ELENAGVEVLKFSQVKEVKKTLGLEVSMVTAVPGRLPVMTPDCLLWAGRVPNTKDLSLNKLGIQ  
TDDKGHIIVDEFQNTNVKGIYAVGDVCGKALLTPVAIAAGRKLAHRLFYKEDSKLDYNNIPTVVFHPP  
IGTVGLTEDEAIHKYGIENVKTYSTSFTPMYHAVTKRKTCKVMKMCANKEEKVVGIHMQLGCDDEMLQG  
FAVAVKMGATKADFDNTVAIHPTSSEELVTLR

**TRTRPLEQKLISEEDLAANDILDYKDDDDKV**

**Tag:** C-Myc/DDK

**Predicted MW:** 56.1 kDa

**Concentration:** >0.05 µg/µL as determined by microplate BCA method

**Purity:** > 80% as determined by SDS-PAGE and Coomassie blue staining

**Buffer:** 25 mM Tris-HCl, 100 mM glycine, pH 7.3, 10% glycerol

**Preparation:** Recombinant protein was captured through anti-DDK affinity column followed by conventional chromatography steps.

**Note:** For testing in cell culture applications, please filter before use. Note that you may experience some loss of protein during the filtration process.

**Storage:** Store at -80°C.

**Stability:** Stable for 12 months from the date of receipt of the product under proper storage and handling conditions. Avoid repeated freeze-thaw cycles.



[View online >](#)

RefSeq: [NP\\_000628](#)

Locus ID: 2936

UniProt ID: [P00390, V9HW90](#)

RefSeq Size: 3174

Cytogenetics: 8p12

RefSeq ORF: 1566

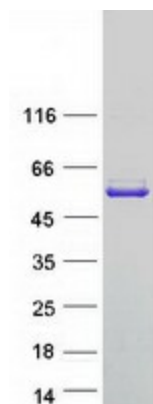
Synonyms: GR; GSRD; HEL-75; HEL-S-122m

**Summary:** This gene encodes a member of the class-I pyridine nucleotide-disulfide oxidoreductase family. This enzyme is a homodimeric flavoprotein. It is a central enzyme of cellular antioxidant defense, and reduces oxidized glutathione disulfide (GSSG) to the sulfhydryl form GSH, which is an important cellular antioxidant. Rare mutations in this gene result in hereditary glutathione reductase deficiency. Multiple alternatively spliced transcript variants encoding different isoforms have been found. [provided by RefSeq, Aug 2010]

**Protein Families:** Druggable Genome

**Protein Pathways:** Glutathione metabolism

### Product images:



Coomassie blue staining of purified GSR protein (Cat# [TP309652]). The protein was produced from HEK293T cells transfected with GSR cDNA clone (Cat# [RC209652]) using MegaTran 2.0 (Cat# [TT210002]).