

Product datasheet for **TP309644M**

GADD45GIP1 (NM_052850) Human Recombinant Protein

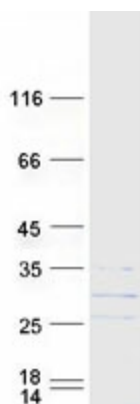
Product data:

Product Type:	Recombinant Proteins
Description:	Recombinant protein of human growth arrest and DNA-damage-inducible, gamma interacting protein 1 (GADD45GIP1), 100 µg
Species:	Human
Expression Host:	HEK293T
Expression cDNA Clone or AA Sequence:	>RC209644 protein sequence Red =Cloning site Green =Tags(s) MAASVRQARSLLGVAATLAPGSRGYRARPPPPRRPGPRWPDPELLTPRWQLGPRYAAKQFARYGAASGV VPGSLWPSPEQLRELEAEEREWYPSLATMQESLRVKQLAEEQKRREREQHIAECMAKMPQMIVNWQQQQR ENWEKAQADKERRARLQAEAQELLGYQVDPRSARFQELLQDLEKKERKRLKEEKQKRKKEARAAALAAV AQDPAASGAPSS TRTRPLEQKLISEEDLAANDILDYKDDDDKV
Tag:	C-Myc/DDK
Predicted MW:	25.2 kDa
Concentration:	>0.05 µg/µL as determined by microplate BCA method
Purity:	> 80% as determined by SDS-PAGE and Coomassie blue staining
Buffer:	25 mM Tris-HCl, 100 mM glycine, pH 7.3, 10% glycerol
Preparation:	Recombinant protein was captured through anti-DDK affinity column followed by conventional chromatography steps.
Note:	For testing in cell culture applications, please filter before use. Note that you may experience some loss of protein during the filtration process.
Storage:	Store at -80°C.
Stability:	Stable for 12 months from the date of receipt of the product under proper storage and handling conditions. Avoid repeated freeze-thaw cycles.
RefSeq:	<u>NP_443082</u>


[View online »](#)

Locus ID:	90480
UniProt ID:	Q8TAE8
RefSeq Size:	772
Cytogenetics:	19p13.13
RefSeq ORF:	666
Synonyms:	CKBBP2; CKbetaBP2; CRIF1; MRP-L59; PLINP; PLINP-1; Plinp1; PRG6
Summary:	This gene encodes a nuclear-localized protein that may be induced by p53 and regulates the cell cycle by inhibiting G1 to S phase progression. The encoded protein may interact with other cell cycle regulators. [provided by RefSeq, Aug 2012]

Product images:



Coomassie blue staining of purified GADD45GIP1 protein (Cat# [TP309644]). The protein was produced from HEK293T cells transfected with GADD45GIP1 cDNA clone (Cat# [RC209644]) using MegaTran 2.0 (Cat# [TT210002]).