

Product datasheet for **TP309644**

GADD45GIP1 (NM_052850) Human Recombinant Protein

Product data:

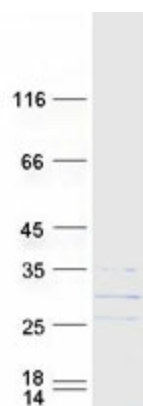
Product Type:	Recombinant Proteins
Description:	Recombinant protein of human growth arrest and DNA-damage-inducible, gamma interacting protein 1 (GADD45GIP1), 20 µg
Species:	Human
Expression Host:	HEK293T
Expression cDNA	>RC209644 protein sequence
Clone or AA Sequence:	Red=Cloning site Green=Tags(s)
	<p>MAASVRQARSLLGVAATLAPGSRGYRARPPPPRRPGPRWDPEDLLTPRWQLGPRYAAKQFARYGAASGV VPGSLWPSPEQLRELEAEEREWYPSLATMQESLRVKQLAAEQKRREREQHIAECMAKMPQMIVNWQQQQR ENWEKAQADKERRARLQAEAQELLGYQVDPRSARFQELLQDLEKKERKRLKEEKQKRKKEARAAALAAAV AQDPAASGAPSS</p> <p>TRTRPLEQKLISEEDLAANDILDYKDDDDKV</p>
Tag:	C-Myc/DDK
Predicted MW:	25.2 kDa
Concentration:	>0.05 µg/µL as determined by microplate BCA method
Purity:	> 80% as determined by SDS-PAGE and Coomassie blue staining
Buffer:	25 mM Tris-HCl, 100 mM glycine, pH 7.3, 10% glycerol
Preparation:	Recombinant protein was captured through anti-DDK affinity column followed by conventional chromatography steps.
Note:	For testing in cell culture applications, please filter before use. Note that you may experience some loss of protein during the filtration process.
Storage:	Store at -80°C.
Stability:	Stable for 12 months from the date of receipt of the product under proper storage and handling conditions. Avoid repeated freeze-thaw cycles.
RefSeq:	<u>NP_443082</u>
Locus ID:	90480



[View online »](#)

UniProt ID:	<u>Q8TAE8</u>
RefSeq Size:	772
Cytogenetics:	19p13.13
RefSeq ORF:	666
Synonyms:	CKBBP2; CKbetaBP2; CRIF1; MRP-L59; PLINP; PLINP-1; Plinp1; PRG6
Summary:	This gene encodes a nuclear-localized protein that may be induced by p53 and regulates the cell cycle by inhibiting G1 to S phase progression. The encoded protein may interact with other cell cycle regulators. [provided by RefSeq, Aug 2012]

Product images:



Coomassie blue staining of purified GADD45GIP1 protein (Cat# TP309644). The protein was produced from HEK293T cells transfected with GADD45GIP1 cDNA clone (Cat# [RC209644]) using MegaTran 2.0 (Cat# [TT210002]).