

## Product datasheet for TP309632M

### WTAP (NM\_004906) Human Recombinant Protein

#### Product data:

|                                       |  |
|---------------------------------------|--|
| Product Type:                         | Recombinant Proteins   |
| Description:                          | Recombinant protein of human Wilms tumor 1 associated protein (WTAP), transcript variant 1, 100 µg |
| Species:                              | Human  |
| Expression Host:                      | HEK293T  |
| Expression cDNA Clone or AA Sequence: | >RC209632 protein sequence<br>Red=Cloning site Green=Tags(s)                                       |

MTNEEPLPKKVRLESETDFKVMARDELILRWKQYEAYVQALEGKYTDLNSNDVTGLRESEEKQKQQQESA  
RRENILVMRLATKEQEMQECTTQIQYLKQVQQPSVAQLRSTMVDPAINLFFLKMKGELEQTKDKLEQAQN  
ELSAWKFTPDSQTGKKLMAKCRMLIQENQELGRQLSQGRIQLEAELALQKKYSEELKSSQDELNDFIQ  
LDEEVEGMQSTILVLQQQLKETRQQLAQYQQQQSQASAPSTSRTTASEPVEQSEATSKDCSRLTNGPSNG  
SSSRQRTSGSGFHREGNTTEDDFPSSPGNGNKSSNSSEERTGRGGSGYVNQLSAGYESVDSPTGSENLT  
HQSNDTSSSDHPQEEKAVSGKGNRTVGSRHVQNGLDSSVNVQGSVL

TRTRPLEQKLISEEDLAANDILDYKDDDDKV

|                |  |
|----------------|--|
| Tag:           | C-Myc/DDK  |
| Predicted MW:  | 44.1 kDa   |
| Concentration: | >0.05 µg/µL as determined by microplate BCA method   |
| Purity:        | > 80% as determined by SDS-PAGE and Coomassie blue staining  |
| Buffer:        | 25 mM Tris-HCl, 100 mM glycine, pH 7.3, 10% glycerol   |
| Preparation:   | Recombinant protein was captured through anti-DDK affinity column followed by conventional chromatography steps.                                     |
| Note:          | For testing in cell culture applications, please filter before use. Note that you may experience some loss of protein during the filtration process. |
| Storage:       | Store at -80°C.  |
| Stability:     | Stable for 12 months from the date of receipt of the product under proper storage and handling conditions. Avoid repeated freeze-thaw cycles.        |
| RefSeq:        | <u><a href="#">NP_004897</a></u>   |



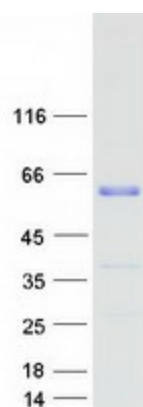
[View online »](#)

Locus ID: 9589  
UniProt ID: [Q15007](#)  
RefSeq Size: 2265  
Cytogenetics: 6q25.3  
RefSeq ORF: 1188  
Synonyms: Mum2

**Summary:** The Wilms tumor suppressor gene WT1 appears to play a role in both transcriptional and posttranscriptional regulation of certain cellular genes. This gene encodes a WT1-associating protein, which is a ubiquitously expressed nuclear protein. Like WT1 protein, this protein is localized throughout the nucleoplasm as well as in speckles and partially colocalizes with splicing factors. Alternative splicing of this gene results in several transcript variants encoding three different isoforms. [provided by RefSeq, Jul 2012]

**Protein Families:** Druggable Genome

### Product images:



Coomassie blue staining of purified WTAP protein (Cat# [TP309632]). The protein was produced from HEK293T cells transfected with WTAP cDNA clone (Cat# [RC209632]) using MegaTran 2.0 (Cat# [TT210002]).