

## Product datasheet for TP309632L

### WTAP (NM\_004906) Human Recombinant Protein

#### Product data:

Product Type:	Recombinant Proteins
Description:	Recombinant protein of human Wilms tumor 1 associated protein (WTAP), transcript variant 1, 1 mg
Species:	Human
Expression Host:	HEK293T
Expression cDNA Clone or AA Sequence:	>RC209632 protein sequence Red=Cloning site Green=Tags(s)

MTNEEPLPKKVRLESETDFKVMARDELILRWKQYEAYVQALEGKYTDLNSNDVTGLRESEEKQKQQQESA  
RRENILVMRLATKEQEMQECTTQIQYLKQVQQPSVAQLRSTMVDPAINLFFLKMKGELEQTKDKLEQAQN  
ELSAWKFTPDSQTGKKLMAKCRMLIQENQELGRQLSQGRIAQLEAELALQKKYSEELKSSQDELNDFIIQ  
LDEEVEGMQSTILVLQQQLKETRQQLAQYQQQSQASAPSTSRRTASEPVEQSEATSKDCSRLTNGPSNG  
SSSRQRTSGSGFHREGNTTEDDFPSSPGNGNKSSNSSEERTGRGGSGYVNQLSAGYESVDSPTGSENLT  
HQSNDTSSHDPQEEKAVSGKGNRTVGSRHVQNGLDSSVNVQGSVL

TRTRPLEQKLISEEDLAANDILDYKDDDDKV

Tag:	C-Myc/DDK
Predicted MW:	44.1 kDa
Concentration:	>0.05 µg/µL as determined by microplate BCA method
Purity:	> 80% as determined by SDS-PAGE and Coomassie blue staining
Buffer:	25 mM Tris-HCl, 100 mM glycine, pH 7.3, 10% glycerol
Preparation:	Recombinant protein was captured through anti-DDK affinity column followed by conventional chromatography steps.
Note:	For testing in cell culture applications, please filter before use. Note that you may experience some loss of protein during the filtration process.
Storage:	Store at -80°C.
Stability:	Stable for 12 months from the date of receipt of the product under proper storage and handling conditions. Avoid repeated freeze-thaw cycles.
RefSeq:	<u><a href="#">NP_004897</a></u>



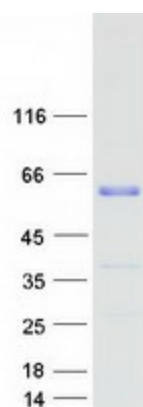
[View online »](#)

Locus ID:	9589
UniProt ID:	<a href="#">Q15007</a>
RefSeq Size:	2265
Cytogenetics:	6q25.3
RefSeq ORF:	1188
Synonyms:	Mum2

**Summary:** The Wilms tumor suppressor gene WT1 appears to play a role in both transcriptional and posttranscriptional regulation of certain cellular genes. This gene encodes a WT1-associating protein, which is a ubiquitously expressed nuclear protein. Like WT1 protein, this protein is localized throughout the nucleoplasm as well as in speckles and partially colocalizes with splicing factors. Alternative splicing of this gene results in several transcript variants encoding three different isoforms. [provided by RefSeq, Jul 2012]

**Protein Families:** Druggable Genome

### Product images:



Coomassie blue staining of purified WTAP protein (Cat# [TP309632]). The protein was produced from HEK293T cells transfected with WTAP cDNA clone (Cat# [RC209632]) using MegaTran 2.0 (Cat# [TT210002]).