

## Product datasheet for **TP309622L**

### **GAB1 (NM\_207123) Human Recombinant Protein**

#### Product data:

|                                       |   |
|---------------------------------------|---|
| Product Type:                         | Recombinant Proteins  |
| Description:                          | Recombinant protein of human GRB2-associated binding protein 1 (GAB1), transcript variant 1, 1 mg |
| Species:                              | Human   |
| Expression Host:                      | HEK293T   |
| Expression cDNA Clone or AA Sequence: | >RC209622 protein sequence<br><b>Red</b> =Cloning site <b>Green</b> =Tags(s)                      |

MSGGEVVC SGWLRKSPPEK KRYAWKRRWFVLRSGRLTGDPDVLEYYKNDHAKKPIRIIDLNLCCQVDA  
GLTFNKKEFENSYIFDINTIDRIFYLVADSEEMNKWVRCICDICGFNPTEEDPVKPPGSSLQAPADLPL  
AINTAPPSTQADSSATLPPPYQLINVPPHLETGLIQEDPQDYLLINCQSKKPEPTRTHADSAKSTSSE  
TDCNDNVPSHKNPASSQSKHGMNGFFQQMIYDSPSRAPSASVDSSLYNLPRSYSHDVLPKVSPSSTE  
DGELYVFNTPSGTSSVETQMRHVSISYDIPPTPGNTYQIPRTFPEGTLGQTSKLDITIPDIPPRPPKPHP  
AHDRSPVETCSIPRTASDTDSSYCIPTAGMSPSRNTISTVDLNKLRKDASSQDCYDIPRAFPSDRSSSL  
EGFHNHFVKVKNVLTVGVSSEELDENYVPMNPNPSPRQHSSSFTEPIQEANYVPMTPGTFDFSSFGMQVP  
PPAHMGRSSPKTPRRPVPVADCEPPPVDRLNPKDRKGQSPKILRLKPHGLERTDSQTIGDFATRRKVK  
PAPLEIKPLPEWEELQAPVRSPIRFSFARDSSRFPMSPRPDSVHSTTSSSDSHDSEENYVPMNPNLSSD  
PNLFGNSLDGGSSPMIKPKGDKQVEYLDL DLDSGKSTPPRKQKSSGSGSSVADERVDYVVVDQQKTLAL  
KSTREAWTDGRQSTESETPAKSVK

**TRTRPLEQKLISEEDLAANDILDYKDDDDKV**

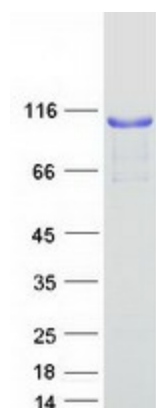
|                |  |
|----------------|--|
| Tag:           | C-Myc/DDK  |
| Predicted MW:  | 79.8 kDa   |
| Concentration: | >0.05 µg/µL as determined by microplate BCA method   |
| Purity:        | > 80% as determined by SDS-PAGE and Coomassie blue staining  |
| Buffer:        | 25 mM Tris-HCl, 100 mM glycine, pH 7.3, 10% glycerol   |
| Preparation:   | Recombinant protein was captured through anti-DDK affinity column followed by conventional chromatography steps.                                     |
| Note:          | For testing in cell culture applications, please filter before use. Note that you may experience some loss of protein during the filtration process. |



[View online »](#)

|                          |   |
|--------------------------|---|
| <b>Storage:</b>          | Store at -80°C.   |
| <b>Stability:</b>        | Stable for 12 months from the date of receipt of the product under proper storage and handling conditions. Avoid repeated freeze-thaw cycles.   |
| <b>RefSeq:</b>           | <a href="#">NP_997006</a>   |
| <b>Locus ID:</b>         | 2549  |
| <b>UniProt ID:</b>       | <a href="#">Q13480</a> , <a href="#">Q9HA84</a>   |
| <b>RefSeq Size:</b>      | 7926  |
| <b>Cytogenetics:</b>     | 4q31.21   |
| <b>RefSeq ORF:</b>       | 2172  |
| <b>Synonyms:</b>         | DFNB26  |
| <b>Summary:</b>          | The protein encoded by this gene is a member of the IRS1-like multisubstrate docking protein family. It is an important mediator of branching tubulogenesis and plays a central role in cellular growth response, transformation and apoptosis. Two transcript variants encoding different isoforms have been found for this gene. [provided by RefSeq, Aug 2008] |
| <b>Protein Families:</b> | Druggable Genome  |
| <b>Protein Pathways:</b> | ErbB signaling pathway, Neurotrophin signaling pathway, Renal cell carcinoma  |

### Product images:



Coomassie blue staining of purified GAB1 protein (Cat# [TP309622]). The protein was produced from HEK293T cells transfected with GAB1 cDNA clone (Cat# [RC209622]) using MegaTran 2.0 (Cat# [TT210002]).