

Product datasheet for TP309622

GAB1 (NM_207123) Human Recombinant Protein

Product data:

Product Type:	Recombinant Proteins
Description:	Recombinant protein of human GRB2-associated binding protein 1 (GAB1), transcript variant 1, 20 µg
Species:	Human
Expression Host:	HEK293T
Expression cDNA Clone or AA Sequence:	>RC209622 protein sequence Red=Cloning site Green=Tags(s)

MSGGEVVCSGWLRKSPPEKCLKRYAWKRRWFVLRSGRLTGDPDVLEYYKNDHAKKPIRIIDLNLCCQVDA
GLTFNKKEFENSYIFDINTIDRIFYLVADSEEMNKWVRCICDICGFNPTEEDPVKPPGSSLQAPADLPL
AINTAPPSTQADSSATLPPPYQLINVPPHLETGLIQEDPQDYLLLINCQSKKPEPTRTHADSAKSTSSE
TDCNDNVPSHKNPASSQSKHGMNGFFQQMIYDSPSRAPSASVDSSLYNLPRSYSHDVLPKVSPSSTE
DGELYVFNTPSGTSSVETQMRHVSISYDIPPTPGNTYQIPRTFPEGTLGQTSKLDITIPDIPPRPPKPHP
AHDRSPVETCSIPRTASDTDSSYCIPTAGMSPSRSTISTVDLNKLRKDASSQDCYDIPRAFPSDRSSSL
EGFHNHFVKVKNVLTVGSVSSEELDENYVPMNPNPSPRQHSSSFTEPIQEANYVPMTPGTFDFSSFGMQVP
PPAHMGRSSPKTPRRPVPVADCEPPPVDRLNPKDRKGQSPKILRLKPHGLERTDSQTIGDFATRRKVK
PAPLEIKPLPEWEELQAPVRSPIRFSFARDSSRFPMSPRDSVHSTTSSSDSHDSEENYVPMNPNLSSD
PNLFGNSLDGGSSPMIKPKGDKQVEYLDLDDLSGKSTPPRKQKSSGSGSSVADERVDYVVVDQQKTLAL
KSTREAWTDGRQSTESETPAKSVK

TRTRPLEQKLISEEDLAANDILDYKDDDDKV

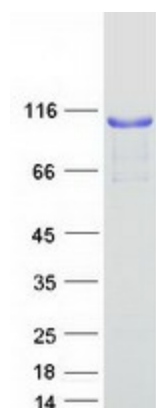
Tag:	C-Myc/DDK
Predicted MW:	79.8 kDa
Concentration:	>0.05 µg/µL as determined by microplate BCA method
Purity:	> 80% as determined by SDS-PAGE and Coomassie blue staining
Buffer:	25 mM Tris-HCl, 100 mM glycine, pH 7.3, 10% glycerol
Preparation:	Recombinant protein was captured through anti-DDK affinity column followed by conventional chromatography steps.
Note:	For testing in cell culture applications, please filter before use. Note that you may experience some loss of protein during the filtration process.



[View online »](#)

Storage:	Store at -80°C.
Stability:	Stable for 12 months from the date of receipt of the product under proper storage and handling conditions. Avoid repeated freeze-thaw cycles.
RefSeq:	NP_997006
Locus ID:	2549
UniProt ID:	Q13480
RefSeq Size:	7926
Cytogenetics:	4q31.21
RefSeq ORF:	2172
Synonyms:	DFNB26
Summary:	The protein encoded by this gene is a member of the IRS1-like multisubstrate docking protein family. It is an important mediator of branching tubulogenesis and plays a central role in cellular growth response, transformation and apoptosis. Two transcript variants encoding different isoforms have been found for this gene. [provided by RefSeq, Aug 2008]
Protein Families:	Druggable Genome
Protein Pathways:	ErbB signaling pathway, Neurotrophin signaling pathway, Renal cell carcinoma

Product images:



Coomassie blue staining of purified GAB1 protein (Cat# TP309622). The protein was produced from HEK293T cells transfected with GAB1 cDNA clone (Cat# [RC209622]) using MegaTran 2.0 (Cat# [TT210002]).