

## Product datasheet for TP309615L

### REEP1 (NM\_022912) Human Recombinant Protein

#### Product data:

Product Type:	Recombinant Proteins
Description:	Recombinant protein of human receptor accessory protein 1 (REEP1), 1 mg
Species:	Human
Expression Host:	HEK293T
Expression cDNA Clone or AA Sequence:	>RC209615 protein sequence <b>Red</b> =Cloning site <b>Green</b> =Tags(s)
	MVSWIISRLVVLIFGTLYPAYYSYKAVKSKDIKEYVKWMMYWIIFALTTAETFTDIFLCWFPFYELKI AFVAWLLSPYTKGSSLLYRKFVHPTLSSKEKEIDDCLVQAKDRSYDALVHFGKRGLNVAATAAVMAASKG QGALSERLRSFSMQDLTTIRGDGAPAPSGPPPPGSGRASGKHGQPKMSRSASESASSSGTA
	<b>TRTRPLEQKLISEEDLAANDILDYKDDDDKV</b>
Tag:	C-Myc/DDK
Predicted MW:	22.1 kDa
Concentration:	>0.05 µg/µL as determined by microplate BCA method
Purity:	> 80% as determined by SDS-PAGE and Coomassie blue staining
Buffer:	25 mM Tris-HCl, 100 mM glycine, pH 7.3, 10% glycerol
Preparation:	Recombinant protein was captured through anti-DDK affinity column followed by conventional chromatography steps.
Note:	For testing in cell culture applications, please filter before use. Note that you may experience some loss of protein during the filtration process.
Storage:	Store at -80°C.
Stability:	Stable for 12 months from the date of receipt of the product under proper storage and handling conditions. Avoid repeated freeze-thaw cycles.
RefSeq:	<a href="#">NP_075063</a>
Locus ID:	65055
UniProt ID:	<a href="#">Q9H902</a>
RefSeq Size:	3868



[View online »](#)

Cytogenetics: 2p11.2

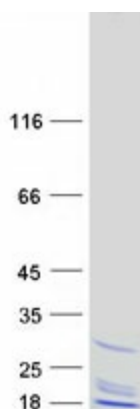
RefSeq ORF: 603

Synonyms: C2orf23; HMN5B; SPG31; Yip2a

**Summary:** This gene encodes a mitochondrial protein that functions to enhance the cell surface expression of odorant receptors. Mutations in this gene cause spastic paraplegia autosomal dominant type 31, a neurodegenerative disorder. Alternative splicing results in multiple transcript variants. [provided by RefSeq, Sep 2009]

**Protein Families:** Druggable Genome, Transmembrane

### Product images:



Coomassie blue staining of purified REEP1 protein (Cat# [TP309615]). The protein was produced from HEK293T cells transfected with REEP1 cDNA clone (Cat# [RC209615]) using MegaTran 2.0 (Cat# [TT210002]).