

## Product datasheet for **TP309603L**

### **MAGEB6 (NM\_173523) Human Recombinant Protein**

#### Product data:

Product Type:	Recombinant Proteins
Description:	Purified recombinant protein of Homo sapiens melanoma antigen family B, 6 (MAGEB6), 1 mg
Species:	Human
Expression Host:	HEK293T
Expression cDNA Clone or AA Sequence:	>RC209603 protein sequence <b>Red</b> =Cloning site <b>Green</b> =Tags(s)
	<p>MPRGHKSKLRTCEKRQETNGQPQGLTGPQATAEKQEESHSSSSSSRACLGDCRRSSDASIPQESQGVSP GSPDAVWSYSKSDVAANGQDEKSPSTRDASVPQESQGASPTGSPDAGVSGSKYDVAANGQDEKSPSTSH DVSVPQESQGASPTGSPDAGVSGSKYDVAEAGEDEESVSASQKAIIFKRLSKDAVKKKACTLAQFLQKKF EKKESILKADMLKCVRREYKPYFPQILNRTSQHLVVAFGVELKEMDSSGESYTLVSKLGLPSEGILSGDN ALPKSGLLMSLLVIFMNGNCATEEEVWEFLGLLGIYDGIHLSIYGDARKIITEDLVQDKYVVYRQVCNS DPPCYEFLWGPARYAETTKMRVLRVLADSSNTSPGLYPHLYEDALIDEVERALRLRA</p> <p><b>TRTRPLEQKLISEEDLAANDILDYKDDDDKV</b></p>
Tag:	C-Myc/DDK
Predicted MW:	43.8 kDa
Concentration:	>0.05 µg/µL as determined by microplate BCA method
Purity:	> 80% as determined by SDS-PAGE and Coomassie blue staining
Buffer:	25 mM Tris-HCl, 100 mM glycine, pH 7.3, 10% glycerol
Preparation:	Recombinant protein was captured through anti-DDK affinity column followed by conventional chromatography steps.
Note:	For testing in cell culture applications, please filter before use. Note that you may experience some loss of protein during the filtration process.
Storage:	Store at -80°C.
Stability:	Stable for 12 months from the date of receipt of the product under proper storage and handling conditions. Avoid repeated freeze-thaw cycles.
RefSeq:	<a href="#">NP_775794</a>
Locus ID:	158809



[View online »](#)

UniProt ID: [Q8N7X4](#)

RefSeq Size: 1949

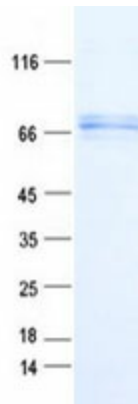
Cytogenetics: Xp21.3

RefSeq ORF: 1221

Synonyms: CT3.4; MAGE-B6; MAGEB6A

**Summary:** This gene is a member of the MAGEB gene family. The members of this family have their entire coding sequences located in the last exon, and the encoded proteins show 50 to 68% sequence identity to each other. The promoters and first exons of the MAGEB genes show considerable variability, suggesting that the existence of this gene family enables the same function to be expressed under different transcriptional controls. This gene is expressed in testis, and in a significant fraction of tumors of various histological types. The MAGEB genes are clustered on chromosome Xp22-p21. [provided by RefSeq, Jul 2008]

### Product images:



Coomassie blue staining of purified MAGEB6 protein (Cat# [TP309603]). The protein was produced from HEK293T cells transfected with MAGEB6 cDNA clone (Cat# [RC209603]) using MegaTran 2.0 (Cat# [TT210002]).