

## Product datasheet for **TP309596M**

### RD3 (NM\_183059) Human Recombinant Protein

#### Product data:

Product Type:	Recombinant Proteins
Description:	Recombinant protein of human retinal degeneration 3 (RD3), 100 µg
Species:	Human
Expression Host:	HEK293T
Expression cDNA Clone or AA Sequence:	>RC209596 protein sequence <b>Red</b> =Cloning site <b>Green</b> =Tags(s)
	 MSLISWLRWNEAPSRLSTRSPAEMVLETLMMELTGQMREAERQQRERSNAVRKVCTGVDYSWLASTPRST YDLSPIERLQLEDVCVKIHPSYCGPAILRFRQLLAEQEPEVQEVSQLFRSVLQEVLERMKQEEEEAHKLTR QWSLRPRGSLATFKTRARISPFASDIRTISEDVERDTPPPLRSWSMPEFRAPKAD  <b>TRTRPLEQKLISEEDLAANDILDYKDDDDKV</b>
Tag:	C-Myc/DDK
Predicted MW:	22.5 kDa
Concentration:	>0.05 µg/µL as determined by microplate BCA method
Purity:	> 80% as determined by SDS-PAGE and Coomassie blue staining
Buffer:	25 mM Tris-HCl, 100 mM glycine, pH 7.3, 10% glycerol
Preparation:	Recombinant protein was captured through anti-DDK affinity column followed by conventional chromatography steps.
Note:	For testing in cell culture applications, please filter before use. Note that you may experience some loss of protein during the filtration process.
Storage:	Store at -80°C.
Stability:	Stable for 12 months from the date of receipt of the product under proper storage and handling conditions. Avoid repeated freeze-thaw cycles.
RefSeq:	<a href="#">NP_898882</a>
Locus ID:	343035
UniProt ID:	<a href="#">Q7Z3Z2</a>
RefSeq Size:	4290



[View online »](#)

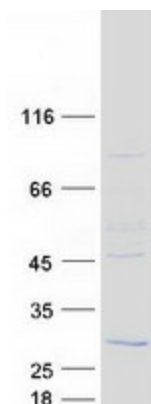
Cytogenetics: 1q32.3

RefSeq ORF: 585

Synonyms: C1orf36; LCA12

**Summary:** This gene encodes a retinal protein that is associated with promyelocytic leukemia-gene product (PML) bodies in the nucleus. Mutations in this gene cause Leber congenital amaurosis type 12, a disease that results in retinal degeneration. Alternative splicing results in multiple transcript variants. [provided by RefSeq, Sep 2009]

### Product images:



Coomassie blue staining of purified RD3 protein (Cat# [TP309596]). The protein was produced from HEK293T cells transfected with RD3 cDNA clone (Cat# [RC209596]) using MegaTran 2.0 (Cat# [TT210002]).