

Product datasheet for **TP309587L**

CENPL (NM_033319) Human Recombinant Protein

Product data:

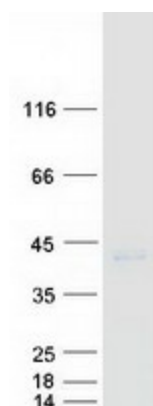
Product Type:	Recombinant Proteins
Description:	Recombinant protein of human centromere protein L (CENPL), transcript variant 2, 1 mg
Species:	Human
Expression Host:	HEK293T
Expression cDNA Clone or AA Sequence:	>RC209587 protein sequence Red =Cloning site Green =Tags(s)
	MDSYSAPESTPSASSRPEDYFIGATPLQKRLESVRKQSSFILTPRRKIPQCSQLQEDVDPQKVAFLHK QWTLYSLTPLYKFSYSNLKEYSRLLNAFIVAEEKQKGLAVEVGEDFNIKVIFSTLLGMKGTQRDPEAFLVQ IVSKSQLPSENREGKVLWTGWFCVFGDSLLETVSEDFTCLPLFLANGAESNTAIGTWQKTFDCYFSP LAINAFNLSWMAAMWTACKMDHYVATTEFLWSVPCSPQSLDISFAIHPEDAKALWDSVHKTPGEVTQEE V DLFMDCLYSHFHRHFKIHLSATRLVRVSTSVASAHTDGKIKILCHKYLIGVLAYLTELAIFQIE TRTRPLEQKLISEEDLAANDILDYKDDDDKV
Tag:	C-Myc/DDK
Predicted MW:	38.8 kDa
Concentration:	>0.05 µg/µL as determined by microplate BCA method
Purity:	> 80% as determined by SDS-PAGE and Coomassie blue staining
Buffer:	25 mM Tris-HCl, 100 mM glycine, pH 7.3, 10% glycerol
Preparation:	Recombinant protein was captured through anti-DDK affinity column followed by conventional chromatography steps.
Note:	For testing in cell culture applications, please filter before use. Note that you may experience some loss of protein during the filtration process.
Storage:	Store at -80°C.
Stability:	Stable for 12 months from the date of receipt of the product under proper storage and handling conditions. Avoid repeated freeze-thaw cycles.
RefSeq:	<u>NP_201576</u>
Locus ID:	91687



[View online »](#)

UniProt ID:	<u>Q8N0S6</u>
RefSeq Size:	2555
Cytogenetics:	1q25.1
RefSeq ORF:	1032
Synonyms:	C1orf155; CENP-L; dj383J4.3
Summary:	CENPL is a subunit of a CENPH (MIM 605607)-CENPI (MIM 300065)-associated centromeric complex that targets CENPA (MIM 117139) to centromeres and is required for proper kinetochore function and mitotic progression (Okada et al., 2006) [PubMed 16622420]. [supplied by OMIM, Mar 2008]

Product images:



Coomassie blue staining of purified CENPL protein (Cat# [TP309587]). The protein was produced from HEK293T cells transfected with CENPL cDNA clone (Cat# [RC209587]) using MegaTran 2.0 (Cat# [TT210002]).