

Product datasheet for TP309580M

FAM13C1 (FAM13C) (NM_001001971) Human Recombinant Protein

Product data:

Product Type:	Recombinant Proteins
Description:	Recombinant protein of human family with sequence similarity 13, member C (FAM13C), transcript variant 2, 100 µg
Species:	Human
Expression Host:	HEK293T
Expression cDNA Clone or AA Sequence:	>RC209580 protein sequence Red =Cloning site Green =Tags(s)

MFSCFCFSLQDNSFSSTTVTECEDPVS LHEDQTDCCSLRDENNKENYPDAGALVEEHAPPSWEPQQQNV
EATVLDVSVLRPSMGNFKSRPKSIFKAESGRSHGESQTEHVSSQSECQVRAGTPAHESPQNNAFKQC
ETVRLQPRIDQRRTAISPKDAFETRQDLNEEEAAQVHGKDPAPASTQSVLADGTDSDPSPVHKDQGNEA
DSAPEDLHSVGTSRLLYHITDGDNPLLSRCSIFSQSQRFNLDPE SAPSPSTQQFMMPRSSSRCS CGDG
KEPQTITQLTKHIQSLKRKIRKFEKFEQEKKYRVTKQDKNLIKPLYDRYRIIKQILSTPSLIPTIQEEE
DSDED RPQGSQQPSLADPASHLPVGDHLYTNETEPVRALLPDEKKEVKPPALSMSNLHEATMPVLLDHL
RETRADKKRLRKALREFEEQFFKQ TGRSPQKEDRIPMADEY EYKHIKAKLRLLEVLISKQDVAKTI

TRTRPLEQKLISEEDLAANDILDYKDDDDKV

Tag:	C-Myc/DDK
Predicted MW:	54.8 kDa
Concentration:	>0.05 µg/µL as determined by microplate BCA method
Purity:	> 80% as determined by SDS-PAGE and Coomassie blue staining
Buffer:	25 mM Tris-HCl, 100 mM glycine, pH 7.3, 10% glycerol
Preparation:	Recombinant protein was captured through anti-DDK affinity column followed by conventional chromatography steps.
Note:	For testing in cell culture applications, please filter before use. Note that you may experience some loss of protein during the filtration process.
Storage:	Store at -80°C.
Stability:	Stable for 12 months from the date of receipt of the product under proper storage and handling conditions. Avoid repeated freeze-thaw cycles.



[View online »](#)

RefSeq: [NP_001001971](#)

Locus ID: 220965

UniProt ID: [Q8NE31](#)

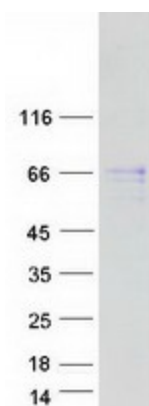
RefSeq Size: 3101

Cytogenetics: 10q21.1

RefSeq ORF: 1461

Synonyms: FAM13C1

Product images:



Coomassie blue staining of purified FAM13C protein (Cat# [TP309580]). The protein was produced from HEK293T cells transfected with FAM13C cDNA clone (Cat# [RC209580]) using MegaTran 2.0 (Cat# [TT210002]).