

Product datasheet for **TP309579L**

TTDA (GTF2H5) (NM_207118) Human Recombinant Protein

Product data:

Product Type:	Recombinant Proteins
Description:	Recombinant protein of human general transcription factor IIH, polypeptide 5 (GTF2H5), 1 mg
Species:	Human
Expression Host:	HEK293T
Expression cDNA Clone or AA Sequence:	>RC209579 protein sequence Red =Cloning site Green =Tags(s)
	MVNVLKGVLIECDPAMKQFLLYLDESNALGKKFIIQDIDDTHVFVIAELVNVLQERVGELMDQNAFSLTQ K
	TRTRPLEQKLISEEDLAANDILDYKDDDDKV
Tag:	C-Myc/DDK
Predicted MW:	7.9 kDa
Concentration:	>0.05 µg/µL as determined by microplate BCA method
Purity:	> 80% as determined by SDS-PAGE and Coomassie blue staining
Buffer:	25 mM Tris-HCl, 100 mM glycine, pH 7.3, 10% glycerol
Preparation:	Recombinant protein was captured through anti-DDK affinity column followed by conventional chromatography steps.
Note:	For testing in cell culture applications, please filter before use. Note that you may experience some loss of protein during the filtration process.
Storage:	Store at -80°C.
Stability:	Stable for 12 months from the date of receipt of the product under proper storage and handling conditions. Avoid repeated freeze-thaw cycles.
RefSeq:	NP_997001
Locus ID:	404672
UniProt ID:	Q6ZYL4
RefSeq Size:	7503
Cytogenetics:	6q25.3



[View online »](#)

RefSeq ORF: 213

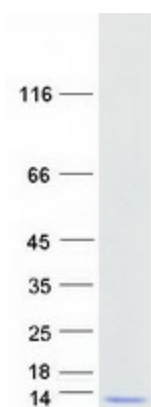
Synonyms: bA120J8.2; C6orf175; TFB5; TFIIH; TGF2H5; TTD; TTD-A; TTD3; TTDA

Summary: This gene encodes a subunit of transcription/repair factor TFIIH, which functions in gene transcription and DNA repair. This protein stimulates ERCC3/XPB ATPase activity to trigger DNA opening during DNA repair, and is implicated in regulating cellular levels of TFIIH. Mutations in this gene result in trichothiodystrophy, complementation group A. [provided by RefSeq, Mar 2009]

Protein Families: Transcription Factors

Protein Pathways: Nucleotide excision repair

Product images:



Coomassie blue staining of purified GTF2H5 protein (Cat# [TP309579]). The protein was produced from HEK293T cells transfected with GTF2H5 cDNA clone (Cat# [RC209579]) using MegaTran 2.0 (Cat# [TT210002]).