

## Product datasheet for **TP309572M**

### ELK4 (NM\_021795) Human Recombinant Protein

#### Product data:

**Product Type:** Recombinant Proteins  
**Description:** Recombinant protein of human ELK4, ETS-domain protein (SRF accessory protein 1) (ELK4), transcript variant b, 100 µg  
**Species:** Human  
**Expression Host:** HEK293T  
**Expression cDNA Clone or AA Sequence:** >RC209572 protein sequence  
**Red**=Cloning site **Green**=Tags(s)

MDSAITLWQFLLQLLQKPQNKHMICWTSNDGQFKLLQAEVARLWGIRKKNKPNMNYDKLSRALRYYYVKN  
IHKVNGQKFVYKFSYPEILNMDPMTVGRIEGDCESLNFSEVSSSSKDVENGKDKPPQPGAKTSSRND  
YIHSGLYSSFTLNSLSSNVKLFKLIK TENPAEKLAEEKSPQEPTPSVIKFVTTSPSKPPVEPVAATISI  
GPSISPSSEETIQALETLVSPKLP SLEAPTSASNVMTAFATTPPISSIPPLQEP RPTSPPLSSHDPDIDT  
DIDSVASQPMELPENLSLEPKDQDSV LLEKDKVNSSRSKKPKGLELAPTLVITSSDPSPLGILSPSLPT  
ASLTPAFFSQVACSLFMVSP LLSFICPFKQIQNLYTQVCFLLRFLVLERLCVTVM

**TRTRPLEQKLISEEDLAANDILDYKDDDDKV**

**Tag:** C-Myc/DDK  
**Predicted MW:** 44.5 kDa  
**Concentration:** >0.05 µg/µL as determined by microplate BCA method  
**Purity:** > 80% as determined by SDS-PAGE and Coomassie blue staining  
**Buffer:** 25 mM Tris-HCl, 100 mM glycine, pH 7.3, 10% glycerol  
**Preparation:** Recombinant protein was captured through anti-DDK affinity column followed by conventional chromatography steps.  
**Note:** For testing in cell culture applications, please filter before use. Note that you may experience some loss of protein during the filtration process.  
**Storage:** Store at -80°C.  
**Stability:** Stable for 12 months from the date of receipt of the product under proper storage and handling conditions. Avoid repeated freeze-thaw cycles.  
**RefSeq:** [NP\\_068567](#)



[View online »](#)

Locus ID: 2005

UniProt ID: [P28324](#), [A0A024R997](#), [Q8IXL1](#)

RefSeq Size: 3077

Cytogenetics: 1q32.1

RefSeq ORF: 1215

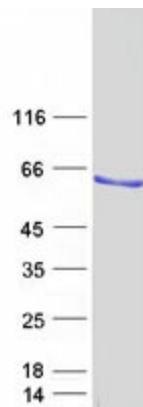
Synonyms: SAP1

**Summary:** This gene is a member of the Ets family of transcription factors and of the ternary complex factor (TCF) subfamily. Proteins of the TCF subfamily form a ternary complex by binding to the the serum response factor and the serum reponse element in the promoter of the c-fos proto-oncogene. The protein encoded by this gene is phosphorylated by the kinases, MAPK1 and MAPK8. Several transcript variants have been described for this gene. [provided by RefSeq, Jul 2008]

**Protein Families:** Druggable Genome, Transcription Factors

**Protein Pathways:** MAPK signaling pathway

### Product images:



Coomassie blue staining of purified ELK4 protein (Cat# [TP309572]). The protein was produced from HEK293T cells transfected with ELK4 cDNA clone (Cat# [RC209572]) using MegaTran 2.0 (Cat# [TT210002]).