

Product datasheet for TP309559L

LLGL2 (NM_001031803) Human Recombinant Protein

Product data:

Product Type:	Recombinant Proteins
Description:	Purified recombinant protein of Homo sapiens lethal giant larvae homolog 2 (Drosophila) (LLGL2), transcript variant 3, 1 mg
Species:	Human
Expression Host:	HEK293T
Expression cDNA Clone or AA Sequence:	>RC209559 protein sequence Red=Cloning site Green=Tags(s)

MRRFLRPGHDPVRRERLKRDLFQFNKTVEHGFPHQPSALGYSPSLRILAIGTRSGAIKLYGAPGVVEFMGLH
QENNAVTQIHLLPGQCQLVTLDDNSLHLWLSLKVKGASELQEDESFTLRGPPGAAPSATQITVVLPHSS
CELLYLGTESGNVFWQLPAFRALEDRTISSDAVLQRLPEEARHRRVFEMVEALQEHPDPNQILIGYSR
GLVWIWDLQGSRVLYHFLSSQQLENIWWQRDGRLLVSCSDGSYCQWPVSSEAQQPEPLRSLVPYGPFP
KAITRILWLTTRQGLPFTIFQGGMPRASYGDRHCISVIHDGQQTAFDFTSRVIGFTVLTEADPAATFDDP
YALVLAEEEELVIDLQTAGWPPVQLPYLASLHCSAITCSHHVSNIPKLWERIIAAGSRQNAHFSTMEW
PIDGGTSLTPAPPQRDLLLLTGHDGTVRFWDASGVCLRLLYKLSTVRVFLTDDPNENLSAQGEDEWPP
RKVGSFDPYSDDPRLGIQKIFLCKYSGYLAVAGTAGQVLVLELNDEAAEQAVEQVEADLLQDQEGYRWKG
HERLAARSGPVRFEFGFQPFVLVQCQPPAVVTSALHSEWRLVAFGTSHGFGLFDHQRRQVFKCTLHP
SDQLALEGPLSRVKSLSLRQSFRRMRRSRVSSRKRHPAGPPGEAQEGSAKAERPLQNMELAPVQRKI
EARSAEDSFTGFVRTLYFADTYLKDSSRHCPSLWAGTNGGTIYAFSLRVPPAERRMDESVRAEQAKEIQL
MHRAPVVGILVLDGHSVPLPEPLEVAHDLSKSPDMQGSQLLVSEEQFKVFTLPKVS AKLKLKLTALEG
SRVRRVSVAHFGSRAEDYGEHHLAVLTNLGDIQVSLPLLKPQVRYSCIRREDVSGIASCVFTKYGQGF
YLISPSEFERFSLSTKWLVPRCLVDSAETKNHRPGNGAGPKKAPSRARNSGTQSDGEEKQPGLVMERAL
LSDERVLKEIQSTLEGDRGSGNWRSHRAAVGCSLSNGGAE

TRTRPLEQKLISEEDLAANDILDYKDDDDKV

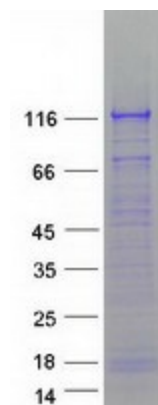
Tag:	C-Myc/DDK
Predicted MW:	113.3 kDa
Concentration:	>0.05 µg/µL as determined by microplate BCA method
Purity:	> 80% as determined by SDS-PAGE and Coomassie blue staining
Buffer:	25 mM Tris-HCl, 100 mM glycine, pH 7.3, 10% glycerol



[View online »](#)

Preparation:	Recombinant protein was captured through anti-DDK affinity column followed by conventional chromatography steps.
Note:	For testing in cell culture applications, please filter before use. Note that you may experience some loss of protein during the filtration process.
Storage:	Store at -80°C.
Stability:	Stable for 12 months from the date of receipt of the product under proper storage and handling conditions. Avoid repeated freeze-thaw cycles.
RefSeq:	NP_001026973
Locus ID:	3993
UniProt ID:	Q6P1M3 , A0PJJ0
RefSeq Size:	3590
Cytogenetics:	17q25.1
RefSeq ORF:	3060
Synonyms:	HGL; Hgl-2; LGL2
Summary:	The lethal (2) giant larvae protein of Drosophila plays a role in asymmetric cell division, epithelial cell polarity, and cell migration. This human gene encodes a protein similar to lethal (2) giant larvae of Drosophila. In fly, the protein's ability to localize cell fate determinants is regulated by the atypical protein kinase C (aPKC). In human, this protein interacts with aPKC-containing complexes and is cortically localized in mitotic cells. Alternative splicing results in multiple transcript variants encoding different isoforms. [provided by RefSeq, Jul 2008]
Protein Families:	Druggable Genome
Protein Pathways:	Tight junction

Product images:



Coomassie blue staining of purified LLGL2 protein (Cat# [TP309559]). The protein was produced from HEK293T cells transfected with LLGL2 cDNA clone (Cat# [RC209559]) using MegaTran 2.0 (Cat# [TT210002]).