

## Product datasheet for TP309559

### LLGL2 (NM\_001031803) Human Recombinant Protein

#### Product data:

Product Type:	Recombinant Proteins
Description:	Purified recombinant protein of Homo sapiens lethal giant larvae homolog 2 (Drosophila) (LLGL2), transcript variant 3, 20 µg
Species:	Human
Expression Host:	HEK293T
Expression cDNA Clone or AA Sequence:	>RC209559 protein sequence Red=Cloning site Green=Tags(s)

MRRFLRPGHDPVRRERLKRDLFQFNKTVEHGFPHQPSALGYSPSLRILAIGTRSGAIKLYGAPGVVEFMGLH  
QENNAVTQIHLLPGQCQLVTLDDNSLHLWLSLKVKGASELQEDESFTLRGPPGAAPSATQITVVLPHSS  
CELLYLGTESGNVFWQLPAFRALEDRTISSDAVLQRLPEEARHRRVFEMVEALQEHPDPNQILIGYSR  
GLVWIWDLQGSRVLYHFLSSQQLENIWWQRDGRLLVSCSDGSYCQWPVSSEAQQPEPLRSLVPYGPFP  
KAITRILWLTTRQGLPFTIFQGGMPRASYGDRHCISVIHDGQQTAFDFTSRVIGFTVLTEADPAATFDDP  
YALVLAEEEELVIDLQTAGWPPVQLPYLASLHCSAITCSHHVSNIPKLWERIIAAGSRQNAHFSTMEW  
PIDGGTSLTPAPPQRDLLLLGHEDGTVRFWDASGVCLRLLYKLSTVRVFLTDDPNENLSAQGEDEWPP  
RKVGSFDPYSDDPRLGIQKIFLCKYSGYLAVAGTAGQVLVLELNDEAAEQAVEQVEADLLQDQEGYRWKG  
HERLAARSGPVRFEFGFQPFVLVQCQPPAVVTSALHSEWRLVAFGTSHGFGLFDHQRRQVFKCTLHP  
SDQLALEGPLSRVKSLSLRQSFRRMRRSRVSSRKRHPAGPPGEAQEGSAKAERPLQNMELAPVQRKI  
EARSAEDSFTGFVRTLYFADTYLKSSRHCPSLWAGTNGGTIYAFSLRVPPEARRMDESVRAEQAKEIQL  
MHRAPVVGILVLDGHSVPLPEPLEVAHDLSKSPDMQGSQLLVSEEQFKVFTLPKVS AKLKLKLTALLEG  
SRVRRVSVAHFGSRAEDYGEHHLAVLTNLGDIQVSLPLLKPQVRYSCIRREDVSGIASCVFTKYGGQGF  
YLISPSEFERFSLSTKWLVPRCLVDSAETKNHRPGNGAGPKKAPSRARNSGTQSDGEEKQPGLVMERAL  
LSDERVLKEIQSTLEGDRGSGNWRSHRAAVGCSLSNGGAE

TRTRPLEQKLISEEDLAANDILDYKDDDDKV

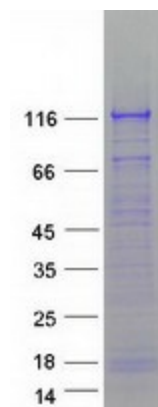
Tag:	C-Myc/DDK
Predicted MW:	113.3 kDa
Concentration:	>0.05 µg/µL as determined by microplate BCA method
Purity:	> 80% as determined by SDS-PAGE and Coomassie blue staining
Buffer:	25 mM Tris-HCl, 100 mM glycine, pH 7.3, 10% glycerol



[View online »](#)

<b>Preparation:</b>	Recombinant protein was captured through anti-DDK affinity column followed by conventional chromatography steps.
<b>Note:</b>	For testing in cell culture applications, please filter before use. Note that you may experience some loss of protein during the filtration process.
<b>Storage:</b>	Store at -80°C.
<b>Stability:</b>	Stable for 12 months from the date of receipt of the product under proper storage and handling conditions. Avoid repeated freeze-thaw cycles.
<b>RefSeq:</b>	<a href="#">NP_001026973</a>
<b>Locus ID:</b>	3993
<b>UniProt ID:</b>	<a href="#">Q6P1M3</a> , <a href="#">A0PJJ0</a>
<b>RefSeq Size:</b>	3590
<b>Cytogenetics:</b>	17q25.1
<b>RefSeq ORF:</b>	3060
<b>Synonyms:</b>	HGL; Hgl-2; LGL2
<b>Summary:</b>	The lethal (2) giant larvae protein of Drosophila plays a role in asymmetric cell division, epithelial cell polarity, and cell migration. This human gene encodes a protein similar to lethal (2) giant larvae of Drosophila. In fly, the protein's ability to localize cell fate determinants is regulated by the atypical protein kinase C (aPKC). In human, this protein interacts with aPKC-containing complexes and is cortically localized in mitotic cells. Alternative splicing results in multiple transcript variants encoding different isoforms. [provided by RefSeq, Jul 2008]
<b>Protein Families:</b>	Druggable Genome
<b>Protein Pathways:</b>	Tight junction

### Product images:



Coomassie blue staining of purified LLGL2 protein (Cat# TP309559). The protein was produced from HEK293T cells transfected with LLGL2 cDNA clone (Cat# [RC209559]) using MegaTran 2.0 (Cat# [TT210002]).