

## Product datasheet for **TP309552M**

### Galectin 2 (LGALS2) (NM\_006498) Human Recombinant Protein

#### Product data:

**Product Type:** Recombinant Proteins

**Description:** Recombinant protein of human lectin, galactoside-binding, soluble, 2 (LGALS2), 100 µg

**Species:** Human

**Expression Host:** HEK293T

**Expression cDNA Clone or AA Sequence:** >RC209552 protein sequence  
**Red**=Cloning site **Green**=Tags(s)

MTGELEVKNMDMKPGSTLKITGSIADGTDGDFVINLGQGTDKLNLHFNPRFSESTIVCNSLDGSNWGQEQR  
EDHLCFSPGSEVKFTVTFESDKFKVKLPDGHELTFPNRLGHSLSYLSVRGGFNMSFKLKE

**TRTRPLEQKLISEEDLAANDILDYKDDDDKV**

**Tag:** C-Myc/DDK

**Predicted MW:** 14.5 kDa

**Concentration:** >0.05 µg/µL as determined by microplate BCA method

**Purity:** > 80% as determined by SDS-PAGE and Coomassie blue staining

**Buffer:** 25 mM Tris-HCl, 100 mM glycine, pH 7.3, 10% glycerol

**Preparation:** Recombinant protein was captured through anti-DDK affinity column followed by conventional chromatography steps.

**Note:** For testing in cell culture applications, please filter before use. Note that you may experience some loss of protein during the filtration process.

**Storage:** Store at -80°C.

**Stability:** Stable for 12 months from the date of receipt of the product under proper storage and handling conditions. Avoid repeated freeze-thaw cycles.

**RefSeq:** [NP\\_006489](#)

**Locus ID:** 3957

**UniProt ID:** [P05162](#)

**RefSeq Size:** 543

**Cytogenetics:** 22q13.1



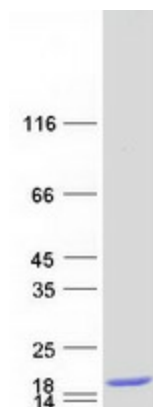
[View online »](#)

RefSeq ORF: 396

Synonyms: HL14

**Summary:** The protein encoded by this gene is a soluble beta-galactoside binding lectin. The encoded protein is found as a homodimer and can bind to lymphotoxin-alpha. A single nucleotide polymorphism in an intron of this gene can alter the transcriptional level of the protein, with a resultant increased risk of myocardial infarction. [provided by RefSeq, Jul 2008]

### Product images:



Coomassie blue staining of purified LGALS2 protein (Cat# [TP309552]). The protein was produced from HEK293T cells transfected with LGALS2 cDNA clone (Cat# [RC209552]) using MegaTran 2.0 (Cat# [TT210002]).