

## Product datasheet for **TP309552L**

### Galectin 2 (LGALS2) (NM\_006498) Human Recombinant Protein

#### Product data:

Product Type:	Recombinant Proteins
Description:	Recombinant protein of human lectin, galactoside-binding, soluble, 2 (LGALS2), 1 mg
Species:	Human
Expression Host:	HEK293T
Expression cDNA Clone or AA Sequence:	>RC209552 protein sequence <b>Red</b> =Cloning site <b>Green</b> =Tags(s)
	MTGELEVKNMDMKPGSTLKITGSIADGTDGFVINLGQGTDKLNLHFNPRFSESTIVCNSLDGSNWGQEQR EDHLCFSPGSEVKFTVTFESDKFKVKLPDGHELTFPNRLGHSHLSYLSVRGGFNMSSFKLKE
	<b>TRTRPLEQKLISEEDLAANDILDYKDDDDKV</b>
Tag:	C-Myc/DDK
Predicted MW:	14.5 kDa
Concentration:	>0.05 µg/µL as determined by microplate BCA method
Purity:	> 80% as determined by SDS-PAGE and Coomassie blue staining
Buffer:	25 mM Tris-HCl, 100 mM glycine, pH 7.3, 10% glycerol
Preparation:	Recombinant protein was captured through anti-DDK affinity column followed by conventional chromatography steps.
Note:	For testing in cell culture applications, please filter before use. Note that you may experience some loss of protein during the filtration process.
Storage:	Store at -80°C.
Stability:	Stable for 12 months from the date of receipt of the product under proper storage and handling conditions. Avoid repeated freeze-thaw cycles.
RefSeq:	<a href="#">NP_006489</a>
Locus ID:	3957
UniProt ID:	<a href="#">P05162</a>
RefSeq Size:	543
Cytogenetics:	22q13.1



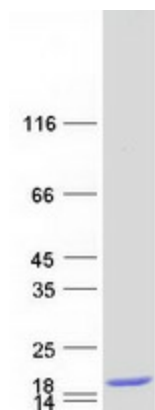
[View online »](#)

RefSeq ORF: 396

Synonyms: HL14

**Summary:** The protein encoded by this gene is a soluble beta-galactoside binding lectin. The encoded protein is found as a homodimer and can bind to lymphotoxin-alpha. A single nucleotide polymorphism in an intron of this gene can alter the transcriptional level of the protein, with a resultant increased risk of myocardial infarction. [provided by RefSeq, Jul 2008]

### Product images:



Coomassie blue staining of purified LGALS2 protein (Cat# [TP309552]). The protein was produced from HEK293T cells transfected with LGALS2 cDNA clone (Cat# [RC209552]) using MegaTran 2.0 (Cat# [TT210002]).