

## Product datasheet for **TP309547L**

### PMF1 (NM\_007221) Human Recombinant Protein

#### Product data:

**Product Type:** Recombinant Proteins

**Description:** Recombinant protein of human polyamine-modulated factor 1 (PMF1), 1 mg

**Species:** Human

**Expression Host:** HEK293T

**Expression cDNA Clone or AA Sequence:** >RC209547 protein sequence  
**Red**=Cloning site **Green**=Tags(s)

MAEASSANLGSGCEEKRHEGSSSESVPPGTTISRVKLLDTMVDTFLQKLVAAGSYQRFTDCYKCFYQLQP  
AMTQRIYDKFIAQLQTSIREEISDIKEEGNLEAVLNALDKIVEEGKVRKEPAWRPSGIPEKDLHSVIAPY  
FLQQRDTLRRHVQKQEAENQQLADAVLAGRRQVEELQLQVQAQQQAWQALHREQRELVAVLREPE

**TRTRPLEQKLISEEDLAANDILDYKDDDDKV**

**Tag:** C-Myc/DDK

**Predicted MW:** 23.2 kDa

**Concentration:** >0.05 µg/µL as determined by microplate BCA method

**Purity:** > 80% as determined by SDS-PAGE and Coomassie blue staining

**Buffer:** 25 mM Tris-HCl, 100 mM glycine, pH 7.3, 10% glycerol

**Preparation:** Recombinant protein was captured through anti-DDK affinity column followed by conventional chromatography steps.

**Note:** For testing in cell culture applications, please filter before use. Note that you may experience some loss of protein during the filtration process.

**Storage:** Store at -80°C.

**Stability:** Stable for 12 months from the date of receipt of the product under proper storage and handling conditions. Avoid repeated freeze-thaw cycles.

**RefSeq:** [NP\\_009152](#)

**Locus ID:** 11243

**UniProt ID:** [Q6P1K2](#)

**RefSeq Size:** 1122



[View online »](#)

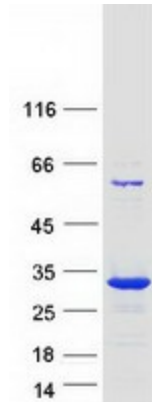
Cytogenetics: 1q22

RefSeq ORF: 615

**Summary:** Part of the MIS12 complex which is required for normal chromosome alignment and segregation and kinetochores formation during mitosis. May act as a cotranscription partner of NFE2L2 involved in regulation of polyamine-induced transcription of SSAT.[UniProtKB/Swiss-Prot Function]

**Protein Families:** Stem cell - Pluripotency

### Product images:



Coomassie blue staining of purified PMF1 protein (Cat# [TP309547]). The protein was produced from HEK293T cells transfected with PMF1 cDNA clone (Cat# [RC209547]) using MegaTran 2.0 (Cat# [TT210002]).