

## Product datasheet for **TP309532M**

### **BOLA1 (NM\_016074) Human Recombinant Protein**

#### Product data:

Product Type:	Recombinant Proteins
Description:	Recombinant protein of human bola homolog 1 (E. coli) (BOLA1), 100 µg
Species:	Human
Expression Host:	HEK293T
Expression cDNA Clone or AA Sequence:	>RC209532 representing NM_016074 <b>Red</b> =Cloning site <b>Green</b> =Tags(s)
	 MLSGRLVLGLVSMAGRVCLCQGSAGSGAIGPVEAAIRTKLEEALSPEVLELRNESGGHAVPPGSETHFRV AVVSSRFEGLSPLQRHRLVHAALAEELGGPVHALAIQARTPAQWRENSQLDTSPPCLGGNKKTLGTP  <b>TRTRPLEQKLISEEDLAANDILDYKDDDDKV</b>
Tag:	C-Myc/DDK
Predicted MW:	14.1 kDa
Concentration:	>0.05 µg/µL as determined by microplate BCA method
Purity:	> 80% as determined by SDS-PAGE and Coomassie blue staining
Buffer:	25 mM Tris-HCl, 100 mM glycine, pH 7.3, 10% glycerol
Preparation:	Recombinant protein was captured through anti-DDK affinity column followed by conventional chromatography steps.
Note:	For testing in cell culture applications, please filter before use. Note that you may experience some loss of protein during the filtration process.
Storage:	Store at -80°C.
Stability:	Stable for 12 months from the date of receipt of the product under proper storage and handling conditions. Avoid repeated freeze-thaw cycles.
RefSeq:	<a href="#">NP_057158</a>
Locus ID:	51027
UniProt ID:	<a href="#">Q9Y3E2</a>
RefSeq Size:	812
Cytogenetics:	1q21.2



[View online »](#)

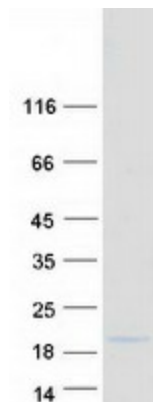
RefSeq ORF: 411

Synonyms: CGI-143

**Summary:** Acts as a mitochondrial iron-sulfur (Fe-S) cluster assembly factor that facilitates (Fe-S) cluster insertion into a subset of mitochondrial proteins (By similarity). Probably acts together with the monothiol glutaredoxin GLRX5 (PubMed:27532772). May protect cells against oxidative stress (PubMed:22746225).[UniProtKB/Swiss-Prot Function]

**Protein Families:** Transcription Factors

### Product images:



Coomassie blue staining of purified BOLA1 protein (Cat# [TP309532]). The protein was produced from HEK293T cells transfected with BOLA1 cDNA clone (Cat# [RC209532]) using MegaTran 2.0 (Cat# [TT210002]).