

Product datasheet for **TP309519L**

ASB6 (NM_017873) Human Recombinant Protein

Product data:

Product Type:	Recombinant Proteins
Description:	Recombinant protein of human ankyrin repeat and SOCS box-containing 6 (ASB6), transcript variant 1, 1 mg
Species:	Human
Expression Host:	HEK293T
Expression cDNA Clone or AA Sequence:	>RC209519 protein sequence Red =Cloning site Green =Tags(s)

MPFLHGFRRRIIFEYQPLVDAILGSLGIQDPERQESLDRPSYVASEESRILVLTELLERKAHSPFYQEGVS
NALLKMAELGLTRAADVLLRHGANLNFEDPVTYYTALHIAVLRNQPDMVELLVHHGADVNRDRIHESSE
LDLASEEPERLPCLQRLLDLGADVNAADKHGKTALLHALASSDGVQIHNTENIRLLLEGGADV KATTKDG
DTVFTCIIFLLGETVGGDKEEAQMINRFCFQVTRLLLAHGADPSECPAHESLTHICLSFKLHFPLLRFL
LESGAAYNCSLHGASCWSGFHIIIFERLCSHPGCTEDESADLLRKAETVLDLMVTNSQKLQLPENFDIHP
VGS LAEKIQALHFSLRQLESYPPPLKHLRCVAIRLYLQPWPVDVKVKALPLPDRLLKWWYLLSEHSGSVEDD
I

TRTRPLEQKLISEEDLAANDILDYKDDDDKV

Tag:	C-Myc/DDK
Predicted MW:	47 kDa
Concentration:	>0.05 µg/µL as determined by microplate BCA method
Purity:	> 80% as determined by SDS-PAGE and Coomassie blue staining
Buffer:	25 mM Tris-HCl, 100 mM glycine, pH 7.3, 10% glycerol
Preparation:	Recombinant protein was captured through anti-DDK affinity column followed by conventional chromatography steps.
Note:	For testing in cell culture applications, please filter before use. Note that you may experience some loss of protein during the filtration process.
Storage:	Store at -80°C.
Stability:	Stable for 12 months from the date of receipt of the product under proper storage and handling conditions. Avoid repeated freeze-thaw cycles.



[View online >](#)

RefSeq: [NP_060343](#)

Locus ID: 140459

UniProt ID: [Q9NWX5](#)

RefSeq Size: 4657

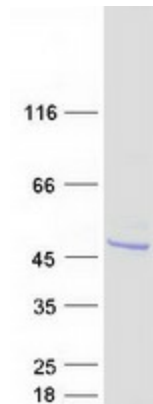
Cytogenetics: 9q34.11

RefSeq ORF: 1263

Summary: The protein encoded by this gene belongs to a family of ankyrin repeat proteins that, along with four other protein families, contain a C-terminal SOCS box motif. Growing evidence suggests that the SOCS box, similar to the F-box, acts as a bridge between specific substrate-binding domains and the more generic proteins that comprise a large family of E3 ubiquitin protein ligases. Alternatively spliced transcript variants have been identified for this gene. [provided by RefSeq, Jan 2011]

Protein Families: Druggable Genome

Product images:



Coomassie blue staining of purified ASB6 protein (Cat# [TP309519]). The protein was produced from HEK293T cells transfected with ASB6 cDNA clone (Cat# [RC209519]) using MegaTran 2.0 (Cat# [TT210002]).