

## Product datasheet for TP309517

### Adducin 2 (ADD2) (NM\_001617) Human Recombinant Protein

#### Product data:

Product Type:	Recombinant Proteins
Description:	Recombinant protein of human adducin 2 (beta) (ADD2), transcript variant beta-1, 20 µg
Species:	Human
Expression Host:	HEK293T
Expression cDNA Clone or AA Sequence:	>RC209517 protein sequence Red=Cloning site Green=Tags(s)

MSEETVPEAASPPPPQGQPYFDRFSEDDPEYMRLRNRAADLRQDFNLMEQKKRVTMILQSPSFREELEGL  
IQEQMKKGNSSNIWALRQIADFMASHTSHAVFPTSSMNVSMMPINDLHTADSLNLAKGERLMRCKISSV  
YRLLDLYGWAQLSDTYVTLRVSKEQDHFLLISPKGVSCSEVTASSLIKVNILGEVVEKGSFCFPVDTTGFC  
LHSAIYAARPDVRCIIHLHTPATAAVSAMKWGLLPVSHNALLVGDMAYYDFNGEMEQAADRINLQKCLGP  
TCKILVLRNHGVALGDTVEEAFYKIFHLQAACEIQVSALSSAGGVENLILLEQEKHRPHEVGSVQWAGS  
TFGPMQKSRLGEHEFEALMRMLDNLGYRTGYTYRHPFVQEKTKHKSEVEIPATVTAFFVEEDGAPVPALR  
QHAQKQKKEKTRWLNTPNAYLRVNVAADEVQRSMGSPRPKTTWMKADEVKSSSGMPIRIENPNQFVPLYT  
DPQEVLEMNRNKIREQNRQDVKSAGPQSLLASVIAEKSRSPSTESQLMSKGDDEDTKDDSEETVNPFSQL  
TDQELEEYKKEVERKKLELDGKETAPEEPGSPAKSAPASPVQSPAKEAETKSPLVSPSKSLEEGTKKTE  
TSKAATTEPETTQPEGVVVNGREEEQTAEIILSKGLSQMTTSADTDVDTSKDKTESVTSGPMSPEGSPSK  
SPSKKKKFRTPSFLKSKKKEKVES

TRTRPLEQKLISEEDLAANDILDYKDDDDKV

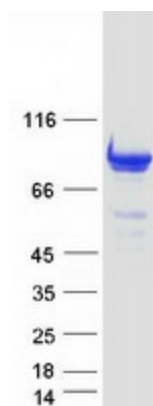
Tag:	C-Myc/DDK
Predicted MW:	80.7 kDa
Concentration:	>0.05 µg/µL as determined by microplate BCA method
Purity:	> 80% as determined by SDS-PAGE and Coomassie blue staining
Buffer:	25 mM Tris-HCl, 100 mM glycine, pH 7.3, 10% glycerol
Preparation:	Recombinant protein was captured through anti-DDK affinity column followed by conventional chromatography steps.
Note:	For testing in cell culture applications, please filter before use. Note that you may experience some loss of protein during the filtration process.
Storage:	Store at -80°C.



[View online »](#)

<b>Stability:</b>	Stable for 12 months from the date of receipt of the product under proper storage and handling conditions. Avoid repeated freeze-thaw cycles.
<b>RefSeq:</b>	<a href="#">NP_001608</a>
<b>Locus ID:</b>	119
<b>UniProt ID:</b>	<a href="#">P35612</a> , <a href="#">Q05DK5</a>
<b>RefSeq Size:</b>	4033
<b>Cytogenetics:</b>	2p13.3
<b>RefSeq ORF:</b>	2178
<b>Synonyms:</b>	ADDB
<b>Summary:</b>	Adducins are heteromeric proteins composed of different subunits referred to as adducin alpha, beta and gamma. The three subunits are encoded by distinct genes and belong to a family of membrane skeletal proteins involved in the assembly of spectrin-actin network in erythrocytes and at sites of cell-cell contact in epithelial tissues. While adducins alpha and gamma are ubiquitously expressed, the expression of adducin beta is restricted to brain and hematopoietic tissues. Adducin, originally purified from human erythrocytes, was found to be a heterodimer of adducins alpha and beta. Polymorphisms resulting in amino acid substitutions in these two subunits have been associated with the regulation of blood pressure in an animal model of hypertension. Heterodimers consisting of alpha and gamma subunits have also been described. Structurally, each subunit is comprised of two distinct domains. The amino-terminal region is protease resistant and globular in shape, while the carboxy-terminal region is protease sensitive. The latter contains multiple phosphorylation sites for protein kinase C, the binding site for calmodulin, and is required for association with spectrin and actin. Alternatively spliced transcript variants have been described. [provided by RefSeq, Jun 2010]

### Product images:



Coomassie blue staining of purified ADD2 protein (Cat# TP309517). The protein was produced from HEK293T cells transfected with ADD2 cDNA clone (Cat# [RC209517]) using MegaTran 2.0 (Cat# [TT210002]).