

## Product datasheet for TP309516

### Lactate Dehydrogenase C (LDHC) (NM\_002301) Human Recombinant Protein

#### Product data:

Product Type:	Recombinant Proteins
Description:	Recombinant protein of human lactate dehydrogenase C (LDHC), transcript variant 1, 20 µg
Species:	Human
Expression Host:	HEK293T
Expression cDNA Clone or AA Sequence:	>RC209516 representing NM_002301 Red=Cloning site Green=Tags(s)

MSTVKEQLIEKLIEDDENSQCKITIVGTGAVGMACAISILLKDLADELALVDVALDKLKGEMMDLQHGSL  
FFSTSKITSGKDYSVSANSRIVIVTAGARQQEGETRLALVQRNVAIMKSIIPAIVHYSYDCKILVSNPV  
DILTYIWWKISGLPVTRVIGSGCNLDSARFRYLIGEKLVHPTSCHGWIIEHGDSSVPLWVGNNVAGVA  
LKTLDPKLGTDSKHEHWKNIHKQVIQSAYEIIKLGYSWAIGLSVMDLVGSILKNLRRVHPVSTMVKGL  
YGIKEELFLSIPCVLGRNGVSDVWKINLNSEEEALFKKSAETLWNIQKDLIF

TRTRPLEQKLISEEDLAANDILDYKDDDDKV

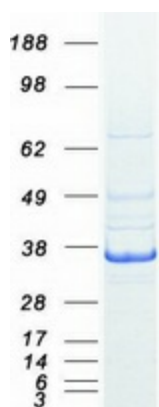
Tag:	C-Myc/DDK
Predicted MW:	36.1 kDa
Concentration:	>0.05 µg/µL as determined by microplate BCA method
Purity:	> 80% as determined by SDS-PAGE and Coomassie blue staining
Buffer:	25 mM Tris-HCl, 100 mM glycine, pH 7.3, 10% glycerol
Preparation:	Recombinant protein was captured through anti-DDK affinity column followed by conventional chromatography steps.
Note:	For testing in cell culture applications, please filter before use. Note that you may experience some loss of protein during the filtration process.
Storage:	Store at -80°C.
Stability:	Stable for 12 months from the date of receipt of the product under proper storage and handling conditions. Avoid repeated freeze-thaw cycles.
RefSeq:	<a href="#">NP_002292</a>
Locus ID:	3948



[View online »](#)

UniProt ID:	<u>P07864, A0A140VKA7</u>
RefSeq Size:	1278
Cytogenetics:	11p15.1
RefSeq ORF:	996
Synonyms:	CT32; LDH3; LDHX
Summary:	Lactate dehydrogenase C catalyzes the conversion of L-lactate and NAD to pyruvate and NADH in the final step of anaerobic glycolysis. LDHC is testis-specific and belongs to the lactate dehydrogenase family. Two transcript variants have been detected which differ in the 5' untranslated region. [provided by RefSeq, Jul 2008]
Protein Pathways:	Cysteine and methionine metabolism, Glycolysis / Gluconeogenesis, Metabolic pathways, Propanoate metabolism, Pyruvate metabolism

### Product images:



Coomassie blue staining of purified LDHC protein (Cat# TP309516). The protein was produced from HEK293T cells transfected with LDHC cDNA clone (Cat# [RC209516]) using MegaTran 2.0 (Cat# [TT210002]).