

## Product datasheet for **TP309511M**

### **RAB22A (NM\_020673) Human Recombinant Protein**

#### Product data:

Product Type:	Recombinant Proteins
Description:	Recombinant protein of human RAB22A, member RAS oncogene family (RAB22A), 100 µg
Species:	Human
Expression Host:	HEK293T
Expression cDNA Clone or AA Sequence:	>RC209511 protein sequence <b>Red</b> =Cloning site <b>Green</b> =Tags(s)
	MALRELKVCLLGDTGVGKSSIVWRFVEDSFDPNINPTIGASFMTKTVQYQNELHKFLIWDTAGQERFRAL APMYRGSAAAIIVYDITKEETFSTLKNWVKELRQHGPPIVVAIAGNKCDLIDVREVMERDAKDYADSI HAIFVETSAKNAININELFIEISRRIPSTDANLPSGGKGFKLRRQPSEPKRSCC
	<b>TRTRPLEQKLISEEDLAANDILDYKDDDDKV</b>
Tag:	C-Myc/DDK
Predicted MW:	21.7 kDa
Concentration:	>0.05 µg/µL as determined by microplate BCA method
Purity:	> 80% as determined by SDS-PAGE and Coomassie blue staining
Buffer:	25 mM Tris-HCl, 100 mM glycine, pH 7.3, 10% glycerol
Preparation:	Recombinant protein was captured through anti-DDK affinity column followed by conventional chromatography steps.
Note:	For testing in cell culture applications, please filter before use. Note that you may experience some loss of protein during the filtration process.
Storage:	Store at -80°C.
Stability:	Stable for 12 months from the date of receipt of the product under proper storage and handling conditions. Avoid repeated freeze-thaw cycles.
RefSeq:	<a href="#">NP_065724</a>
Locus ID:	57403
UniProt ID:	<a href="#">Q9UL26</a>
RefSeq Size:	8702



[View online »](#)

Cytogenetics: 20q13.32

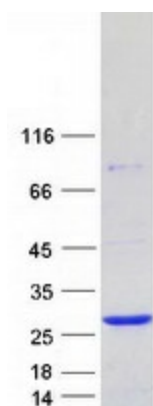
RefSeq ORF: 582

**Summary:** The protein encoded by this gene is a member of the RAB family of small GTPases. The GTP-bound form of the encoded protein has been shown to interact with early-endosomal antigen 1, and may be involved in the trafficking of and interaction between endosomal compartments. [provided by RefSeq, Jul 2008]

**Protein Families:** Druggable Genome

**Protein Pathways:** Endocytosis

### Product images:



Coomassie blue staining of purified RAB22A protein (Cat# [TP309511]). The protein was produced from HEK293T cells transfected with RAB22A cDNA clone (Cat# [RC209511]) using MegaTran 2.0 (Cat# [TT210002]).