

Product datasheet for **TP309510L**

MASA (ENOPH1) (NM_021204) Human Recombinant Protein

Product data:

Product Type:	Recombinant Proteins
Description:	Recombinant protein of human enolase-phosphatase 1 (ENOPH1), 1 mg
Species:	Human
Expression Host:	HEK293T
Expression cDNA Clone or AA Sequence:	>RC209510 protein sequence Red=Cloning site Green=Tags(s)
	MVLSVPAEVTVILLDIEGTTTPIAFVKDILFPYIEENVKEYLQTHWEEECQQDVSLLRKQAEEDAHLG GAVPIPAASGNGVDDLQQMIQAVDNCWQMSLDRKTTALKQLQGHMWRAAFTAGRMKAEFFADVPAVR KWREAGMKVYIYSSGSVEAQKLLFGHSTEGDILELVDGHFDTKIGHKVESESYRKIADSIGCSTNNILFL TDVTREASAAEEADVHVAVVVRPGNAGLTDDEKTYSLITSFSELYLPSST
	TRTRPLEQKLISEEDLAANDILDYKDDDDKV
Tag:	C-Myc/DDK
Predicted MW:	28.8 kDa
Concentration:	>0.05 µg/µL as determined by microplate BCA method
Purity:	> 80% as determined by SDS-PAGE and Coomassie blue staining
Buffer:	25 mM Tris-HCl, 100 mM glycine, pH 7.3, 10% glycerol
Preparation:	Recombinant protein was captured through anti-DDK affinity column followed by conventional chromatography steps.
Note:	For testing in cell culture applications, please filter before use. Note that you may experience some loss of protein during the filtration process.
Storage:	Store at -80°C.
Stability:	Stable for 12 months from the date of receipt of the product under proper storage and handling conditions. Avoid repeated freeze-thaw cycles.
RefSeq:	NP_067027
Locus ID:	58478
UniProt ID:	Q9UHY7



[View online »](#)

RefSeq Size: 2191

Cytogenetics: 4q21.22

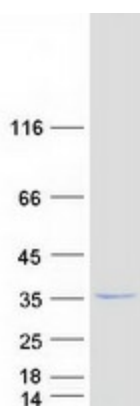
RefSeq ORF: 783

Synonyms: E1; MASA; MST145; mtnC

Summary: Bifunctional enzyme that catalyzes the enolization of 2,3-diketo-5-methylthiopentyl-1-phosphate (DK-MTP-1-P) into the intermediate 2-hydroxy-3-keto-5-methylthiopentenyl-1-phosphate (HK-MTPenyl-1-P), which is then dephosphorylated to form the acireductone 1,2-dihydroxy-3-keto-5-methylthiopentene (DHK-MTPene).[UniProtKB/Swiss-Prot Function]

Protein Pathways: Cysteine and methionine metabolism

Product images:



Coomassie blue staining of purified ENOPH1 protein (Cat# [TP309510]). The protein was produced from HEK293T cells transfected with ENOPH1 cDNA clone (Cat# [RC209510]) using MegaTran 2.0 (Cat# [TT210002]).