

Product datasheet for **TP309508M**

TINAGL1 (NM_022164) Human Recombinant Protein

Product data:

Product Type:	Recombinant Proteins
Description:	Recombinant protein of human tubulointerstitial nephritis antigen-like 1 (TINAGL1), 100 µg
Species:	Human
Expression Host:	HEK293T
Expression cDNA Clone or AA Sequence:	>RC209508 protein sequence Red =Cloning site Green =Tags(s)
	<p>MWRCPLGLLLLLPLAGHLALGAQQGRGRRELAPGLHLRGIRDAGGRYCQEQLCCRGRADDCALPYLGAI CYCDLFCNRTVSDCCPDFWDFCLGVPPFPPIQGCMHGGRIYPVLGTYWDNCNRCTCQENRQWQCDQEPC LVDPDMIKAINQGNYGWQAGNHSFAWGMTLDEGIRYRLGTIRPSSSVMMNHEIYTVLNPGEVLPTAFEAS EKWPNIHEPLDQGNCAWSAFSTAASDRVSIHSLGHMTPVLSQNLSCDTHQQGCRGGRLDGAWW FLRRRGVSDHCYPFSGRERDEAGPAPPCMMHSRAMGRGKRQATAHCPNSVNNNDIYQVTPVYRLGSND KEIMKELMENGVPVQALMEVHEDFFLYKGGIYSHTPVSLGRPERYRRHGTHSVKITGWGEETLPDGRTLKY WTAANSWGPWGERGHRIVRGVNECDIESFVLGVWGRVGMEDMGHH</p> <p>TRTRPLEQKLISEEDLAANDILDYKDDDDKV</p>
Tag:	C-Myc/DDK
Predicted MW:	52.2 kDa
Concentration:	>0.05 µg/µL as determined by microplate BCA method
Purity:	> 80% as determined by SDS-PAGE and Coomassie blue staining
Buffer:	25 mM Tris-HCl, 100 mM glycine, pH 7.3, 10% glycerol
Preparation:	Recombinant protein was captured through anti-DDK affinity column followed by conventional chromatography steps.
Note:	For testing in cell culture applications, please filter before use. Note that you may experience some loss of protein during the filtration process.
Storage:	Store at -80°C.
Stability:	Stable for 12 months from the date of receipt of the product under proper storage and handling conditions. Avoid repeated freeze-thaw cycles.
RefSeq:	<u>NP_071447</u>



[View online »](#)

Locus ID: 64129

UniProt ID: [Q9GZM7](#)

RefSeq Size: 2252

Cytogenetics: 1p35.2

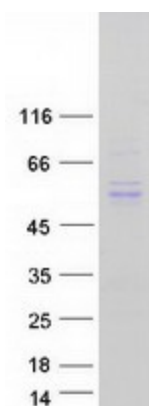
RefSeq ORF: 1401

Synonyms: ARG1; LCN7; LIECG3; TINAGRP

Summary: The protein encoded by this gene is similar in sequence to tubulointerstitial nephritis antigen, a secreted glycoprotein that is recognized by antibodies in some types of immune-related tubulointerstitial nephritis. Three transcript variants encoding different isoforms have been found for this gene. [provided by RefSeq, Feb 2011]

Protein Families: Druggable Genome, Protease, Secreted Protein

Product images:



Coomassie blue staining of purified TINAGL1 protein (Cat# [TP309508]). The protein was produced from HEK293T cells transfected with TINAGL1 cDNA clone (Cat# [RC209508]) using MegaTran 2.0 (Cat# [TT210002]).