

## Product datasheet for **TP309501M**

### **PLBD1 (NM\_024829) Human Recombinant Protein**

#### **Product data:**

**Product Type:** Recombinant Proteins

**Description:** Recombinant protein of human phospholipase B domain containing 1 (PLBD1), 100 µg

**Species:** Human

**Expression Host:** HEK293T

**Expression cDNA Clone  
or AA Sequence:** >RC209501 protein sequence  
**Red**=Cloning site **Green**=Tags(s)

MTRGGPGGRPGLPQPPPLLLLLLLPLLLVTAEPKPKAGVYYATAYWMPAEKTVQVKNVMDKNGDAYGFYN  
NSVKTTGWGILEIRAGYGSQTLSEIIMFVAGFLEGYLTAHPMNDHYTNLYPQLITKPSIMDKVQDFMEK  
QDKWTRKNIKEYKTDSFWRHTGYVMAQIDGLYVGAKKRAILEGTPMTLFIQFLNSVGDLLDLIPSLSP  
TKNGSLKVFKRWDMGHCSALIKVLPGFENILFAHSSWYTYAAMLRIYKHWFNIIKDTSSSRLSFSSYP  
GFLESDDFYILSSGLILLQTTNSVFNKTLKQVIPETLLSWQRVRVANMMADSGKRWADIFSKYNSGT  
NNQYMVLDLKKVKNHSLDKGTLTYVEQIPTVEYSEQTDVLRKGYWPSYNVFPHEKIYNWSGYPLLQK  
LGLDYSYDLAPRAKIFRRDQGVKTDATSMKYIMRYNNYKDPYSRGPDCNTICCREDLNPNPSPGGCYD  
TKVADIYLASQYTSYAISGPTVQGGPLPVFRWDRFNKTLHQGMAEVYNFDFITMKPILKLDIK

**TRTRPLEQKLISEEDLAANDILDYKDDDDKV**

**Tag:** C-Myc/DDK

**Predicted MW:** 63.1 kDa

**Concentration:** >0.05 µg/µL as determined by microplate BCA method

**Purity:** > 80% as determined by SDS-PAGE and Coomassie blue staining

**Buffer:** 25 mM Tris-HCl, 100 mM glycine, pH 7.3, 10% glycerol

**Preparation:** Recombinant protein was captured through anti-DDK affinity column followed by conventional chromatography steps.

**Note:** For testing in cell culture applications, please filter before use. Note that you may experience some loss of protein during the filtration process.

**Storage:** Store at -80°C.

**Stability:** Stable for 12 months from the date of receipt of the product under proper storage and handling conditions. Avoid repeated freeze-thaw cycles.



[View online >](#)

RefSeq: [NP\\_079105](#)

Locus ID: 79887

UniProt ID: [Q6P4A8](#)

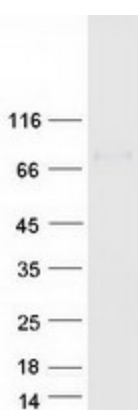
RefSeq Size: 1951

Cytogenetics: 12p13.1

RefSeq ORF: 1941

**Summary:** In view of the small size of the putative binding pocket, it has been proposed that it may act as an amidase or a peptidase (By similarity). Exhibits a weak phospholipase activity, acting on various phospholipids, including phosphatidylcholine, phosphatidylinositol, phosphatidylethanolamine and lysophospholipids.[UniProtKB/Swiss-Prot Function]

### Product images:



Coomassie blue staining of purified PLBD1 protein (Cat# [TP309501]). The protein was produced from HEK293T cells transfected with PLBD1 cDNA clone (Cat# [RC209501]) using MegaTran 2.0 (Cat# [TT210002]).