

Product datasheet for **TP309501L**

PLBD1 (NM_024829) Human Recombinant Protein

Product data:

Product Type:	Recombinant Proteins
Description:	Recombinant protein of human phospholipase B domain containing 1 (PLBD1), 1 mg
Species:	Human
Expression Host:	HEK293T
Expression cDNA Clone or AA Sequence:	>RC209501 protein sequence Red =Cloning site Green =Tags(s)

MTRGGPGGRPGLPQPPPLLLLLLLPLLLVTAEPKPKAGVYYATAYWMPAEKTVQVKNVMDKNGDAYGFYN
NSVKTTGWGILEIRAGYGSQTLSEIIMFVAGFLEGYLTAHPMNDHYTNLYPQLITKPSIMDKVQDFMEK
QDKWTRKNIKEYKTDSFWRHTGYVMAQIDGLYVGAKKRAILEGTPMTLFQIQFLNSVGDLLDLIPSLSP
TKNGSLKVFKRWDMGHCSALIKVLPGFENILFAHSSWYTYAAMLRIYKHWFNIIKDTSSSRLSFSSYP
GFLESDDFYILSSGLILLQTTNSVFNKTLKQVIPETLLSWQRVRVANMMADSGKRWADIFSKYNSGT
NNQYMVLDLKKVKNHSLDKGTLTYVEQIPTVEYSEQTDVLRKGYWPSYNVFPHEKIYNWSGYPLLQK
LGLDYSYDLAPRAKIFRRDQGVKTDATSMKYIMRYNNYKDPYSRGPDCNTICCREDLNPNPSPGGCYD
TKVADIYLASQYTSYAISGPTVQGGPLPVFRWDRFNKTLHQGMAEVYNFDFITMKPILKLDIK

TRTRPLEQKLISEEDLAANDILDYKDDDDKV

Tag:	C-Myc/DDK
Predicted MW:	63.1 kDa
Concentration:	>0.05 µg/µL as determined by microplate BCA method
Purity:	> 80% as determined by SDS-PAGE and Coomassie blue staining
Buffer:	25 mM Tris-HCl, 100 mM glycine, pH 7.3, 10% glycerol
Preparation:	Recombinant protein was captured through anti-DDK affinity column followed by conventional chromatography steps.
Note:	For testing in cell culture applications, please filter before use. Note that you may experience some loss of protein during the filtration process.
Storage:	Store at -80°C.
Stability:	Stable for 12 months from the date of receipt of the product under proper storage and handling conditions. Avoid repeated freeze-thaw cycles.



[View online >](#)

RefSeq: [NP_079105](#)

Locus ID: 79887

UniProt ID: [Q6P4A8](#)

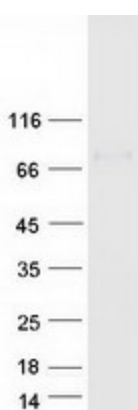
RefSeq Size: 1951

Cytogenetics: 12p13.1

RefSeq ORF: 1941

Summary: In view of the small size of the putative binding pocket, it has been proposed that it may act as an amidase or a peptidase (By similarity). Exhibits a weak phospholipase activity, acting on various phospholipids, including phosphatidylcholine, phosphatidylinositol, phosphatidylethanolamine and lysophospholipids.[UniProtKB/Swiss-Prot Function]

Product images:



Coomassie blue staining of purified PLBD1 protein (Cat# [TP309501]). The protein was produced from HEK293T cells transfected with PLBD1 cDNA clone (Cat# [RC209501]) using MegaTran 2.0 (Cat# [TT210002]).