

Product datasheet for **TP309501**

PLBD1 (NM_024829) Human Recombinant Protein

Product data:

Product Type: Recombinant Proteins

Description: Recombinant protein of human phospholipase B domain containing 1 (PLBD1), 20 µg

Species: Human

Expression Host: HEK293T

Expression cDNA Clone or AA Sequence: >RC209501 protein sequence
Red=Cloning site **Green**=Tags(s)

MTRGGPGGRPGLPQPPPLLLLLLLPLLLVTAEPPKPAGVYYATAYWMPAEKTVQVKNVMDKNGDAYGFYN
NSVKTTGWGILEIRAGYGSQTLSEIIMFVAGFLEGYLTAHPMNDHYTNLYPQLITKPSIMDKVQDFMEK
QDKWTRKNIKEYKTDSFWRHTGYVMAQIDGLYVGAKKRAILEGTPMTLFQIQFLNSVGDLLDLIPSLSP
TKNGSLKVFKRWDMGHCSALIKVLPGFENILFAHSSWYTYAAMLRIYKHWFNIIKDTSSSRLSFSYSP
GFLESLDDFYILSSGLILLQTTNSVFNKTLKQVIPETLLSWQRVRVANMMADSGKRWADIFSKYNSGY
NNQYMVLDLKKVKNHSLDKGTLIVEQIPTVEYSEQTDVLRKGYWPSYNVFPHEKIYNWSGYPLLQK
LGLDYSYDLAPRAKIFRRDQGVKTDATSMKYIMRYNNYKDPYSRGPDCNTICCREDLNSPNPSPGGCYD
TKVADIYLASQYTSYAISGPTVQGGPLPVFRWDRFNKTLHQGMAEVNFDFFITMKPILKLDIK

TRTRPLEQKLISEEDLAANDILDYKDDDDKV

Tag: C-Myc/DDK

Predicted MW: 63.1 kDa

Concentration: >0.05 µg/µL as determined by microplate BCA method

Purity: > 80% as determined by SDS-PAGE and Coomassie blue staining

Buffer: 25 mM Tris-HCl, 100 mM glycine, pH 7.3, 10% glycerol

Preparation: Recombinant protein was captured through anti-DDK affinity column followed by conventional chromatography steps.

Note: For testing in cell culture applications, please filter before use. Note that you may experience some loss of protein during the filtration process.

Storage: Store at -80°C.

Stability: Stable for 12 months from the date of receipt of the product under proper storage and handling conditions. Avoid repeated freeze-thaw cycles.



[View online >](#)

RefSeq: [NP_079105](#)

Locus ID: 79887

UniProt ID: [Q6P4A8](#)

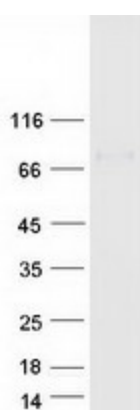
RefSeq Size: 1951

Cytogenetics: 12p13.1

RefSeq ORF: 1941

Summary: In view of the small size of the putative binding pocket, it has been proposed that it may act as an amidase or a peptidase (By similarity). Exhibits a weak phospholipase activity, acting on various phospholipids, including phosphatidylcholine, phosphatidylinositol, phosphatidylethanolamine and lysophospholipids.[UniProtKB/Swiss-Prot Function]

Product images:



Coomassie blue staining of purified PLBD1 protein (Cat# TP309501). The protein was produced from HEK293T cells transfected with PLBD1 cDNA clone (Cat# [RC209501]) using MegaTran 2.0 (Cat# [TT210002]).