

## Product datasheet for TP309500

### THOC7 (NM\_025075) Human Recombinant Protein

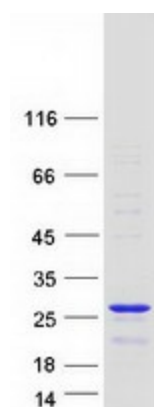
#### Product data:

Product Type:	Recombinant Proteins
Description:	Recombinant protein of human THO complex 7 homolog (Drosophila) (THOC7), 20 µg
Species:	Human
Expression Host:	HEK293T
Expression cDNA Clone or AA Sequence:	>RC209500 protein sequence <span style="color: red;">Red</span> =Cloning site <span style="color: green;">Green</span> =Tags(s)  MGA VTDDEVIRKRL LIDGDGAGDDRRINLLVKSFIKW CNSGSQEEGYSQYQRMLSTLSQCEFSMGKTLLV YDMNLRE MENYEKIYKEIECSIAGAHEKIAECKKQILQAKRIRKNRQEYDALAKVIQHHPDRHETLKELE ALGKELEHLSHIKESVEDKLELRRKQFHVLLSTIHELQQTLENDEKLSEVEEAQEASMETDPKP  <span style="color: red;">TR</span> <span style="color: green;">TRPLEQKLISEEDLAANDILDYKDDDDKV</span>
Tag:	C-Myc/DDK
Predicted MW:	23.6 kDa
Concentration:	>0.05 µg/µL as determined by microplate BCA method
Purity:	> 80% as determined by SDS-PAGE and Coomassie blue staining
Buffer:	25 mM Tris-HCl, 100 mM glycine, pH 7.3, 10% glycerol
Preparation:	Recombinant protein was captured through anti-DDK affinity column followed by conventional chromatography steps.
Note:	For testing in cell culture applications, please filter before use. Note that you may experience some loss of protein during the filtration process.
Storage:	Store at -80°C.
Stability:	Stable for 12 months from the date of receipt of the product under proper storage and handling conditions. Avoid repeated freeze-thaw cycles.
RefSeq:	<a href="#">NP_079351</a>
Locus ID:	80145
UniProt ID:	<a href="#">Q6I9Y2</a>
RefSeq Size:	1027


[View online »](#)

<b>Cytogenetics:</b>	3p14.1
<b>RefSeq ORF:</b>	612
<b>Synonyms:</b>	fSAP24; hTREX30; NIF3L1BP1
<b>Summary:</b>	Required for efficient export of polyadenylated RNA. Acts as component of the THO subcomplex of the TREX complex which is thought to couple mRNA transcription, processing and nuclear export, and which specifically associates with spliced mRNA and not with unspliced pre-mRNA. TREX is recruited to spliced mRNAs by a transcription-independent mechanism, binds to mRNA upstream of the exon-junction complex (EJC) and is recruited in a splicing- and cap-dependent manner to a region near the 5' end of the mRNA where it functions in mRNA export to the cytoplasm via the TAP/NFX1 pathway.[UniProtKB/Swiss-Prot Function]

### Product images:



Coomassie blue staining of purified THOC7 protein (Cat# TP309500). The protein was produced from HEK293T cells transfected with THOC7 cDNA clone (Cat# [RC209500]) using MegaTran 2.0 (Cat# [TT210002]).