

## Product datasheet for **TP309496L**

### LMAN2L (NM\_030805) Human Recombinant Protein

#### Product data:

Product Type:	Recombinant Proteins
Description:	Recombinant protein of human lectin, mannose-binding 2-like (LMAN2L), transcript variant 2, 1 mg
Species:	Human
Expression Host:	HEK293T
Expression cDNA Clone or AA Sequence:	>RC209496 protein sequence <b>Red</b> =Cloning site <b>Green</b> =Tags(s)
	MAATLGPLGSWQQWRRCLSARDGSRMLLLLLLLGSGQGPQQVGAGQTFEYLKREHSLSKPYQGVGTGSSS LWNLMGNAMVMTQYIRLTPDMQSKQGALWNRVPCFLRDWELQVHFKIHGQGKKNLHGDGLAIWYTKDRMQ PGPVFGNMDKFVGLGVFVDYTPNEEKQQERVFPYISAMVNNGSLSYDHERDGRPTELGGCTAIVRNLYHD TFLVIRYVKRHLTIMMDIDGKHEWRDCIEVPGVRLPRGYFGTSSITGDLSDNHVISLKLFEFTVPTP EEEKLHRDVFLPSVDNMKLPENTAPLPLSGLALFLIVFFSLVFSVFAIVIGIILYNKWQEQRKRFY  <b>TRTRPLEQKLISEEDLAANDILDYKDDDDKV</b>
Tag:	C-Myc/DDK
Predicted MW:	39.5 kDa
Concentration:	>0.05 µg/µL as determined by microplate BCA method
Purity:	> 80% as determined by SDS-PAGE and Coomassie blue staining
Buffer:	25 mM Tris-HCl, 100 mM glycine, pH 7.3, 10% glycerol
Preparation:	Recombinant protein was captured through anti-DDK affinity column followed by conventional chromatography steps.
Note:	For testing in cell culture applications, please filter before use. Note that you may experience some loss of protein during the filtration process.
Storage:	Store at -80°C.
Stability:	Stable for 12 months from the date of receipt of the product under proper storage and handling conditions. Avoid repeated freeze-thaw cycles.
RefSeq:	<a href="#">NP_110432</a>
Locus ID:	81562



[View online »](#)

UniProt ID: [Q9H0V9](#)

RefSeq Size: 2425

Cytogenetics: 2q11.2

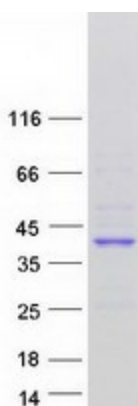
RefSeq ORF: 1044

Synonyms: MRT52; VIPL

**Summary:** This gene encodes a protein belonging to the L-type lectin group of type 1 membrane proteins, which function in the mammalian early secretory pathway. These proteins contain luminal carbohydrate recognition domains, which display homology to leguminous lectins. Unlike other proteins of the group, which cycle in the early secretory pathway and are predominantly associated with post endoplasmic reticulum membranes, the protein encoded by this gene is a non-cycling resident protein of the ER, where it functions as a cargo receptor for glycoproteins. It is proposed to regulate exchange of folded proteins for transport to the Golgi and exchange of misfolded glycoproteins for transport to the ubiquitin-proteasome pathway. [provided by RefSeq, Apr 2016]

**Protein Families:** Druggable Genome, Transmembrane

### Product images:



Coomassie blue staining of purified LMAN2L protein (Cat# [TP309496]). The protein was produced from HEK293T cells transfected with LMAN2L cDNA clone (Cat# [RC209496]) using MegaTran 2.0 (Cat# [TT210002]).