

Product datasheet for **TP309495M**

RGS20 (NM_003702) Human Recombinant Protein

Product data:

| | |
|---------------------------------------|---|
| Product Type: | Recombinant Proteins |
| Description: | Recombinant protein of human regulator of G-protein signaling 20 (RGS20), transcript variant 2, 100 µg |
| Species: | Human |
| Expression Host: | HEK293T |
| Expression cDNA Clone or AA Sequence: | >RC209495 protein sequence Red =Cloning site Green =Tags(s) MRTADGGEPAGASSPAGRVDGGLQMGSERMEMRKRQMPAAQDTPGAAPGQPGAGSRGSNACCFWCCCCS CSCLTVRNQEDQRPTIASHELRLADLPTWEESPAPTLEEVDNAWAQSFDKLMVTPAGRNAFREFLRTEFSEE NMLFWMACEEELKKEANKNIIIEKARIYEDYISILSPKEVSLDSRVREVINRNMVEPSQHIFDDAQLQIY TLMHRDSYPRFMNSAVYKDLLQSLSEKSIEA TRTRPLEQLISEEDLAANDILDYKDDDDKV |
| Tag: | C-Myc/DDK |
| Predicted MW: | 26.9 kDa |
| Concentration: | >0.05 µg/µL as determined by microplate BCA method |
| Purity: | > 80% as determined by SDS-PAGE and Coomassie blue staining |
| Buffer: | 25 mM Tris-HCl, 100 mM glycine, pH 7.3, 10% glycerol |
| Preparation: | Recombinant protein was captured through anti-DDK affinity column followed by conventional chromatography steps. |
| Note: | For testing in cell culture applications, please filter before use. Note that you may experience some loss of protein during the filtration process. |
| Storage: | Store at -80°C. |
| Stability: | Stable for 12 months from the date of receipt of the product under proper storage and handling conditions. Avoid repeated freeze-thaw cycles. |
| RefSeq: | NP_003693 |
| Locus ID: | 8601 |



[View online »](#)

UniProt ID: [O76081](#), [H9NIM5](#), [B3KSW4](#)

RefSeq Size: 1716

Cytogenetics: 8q11.23

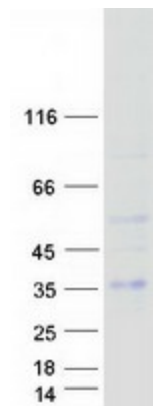
RefSeq ORF: 723

Synonyms: g(z)GAP; gz-GAP; RGSZ1; ZGAP1

Summary: The protein encoded by this gene belongs to the family of regulator of G protein signaling (RGS) proteins, which are regulatory and structural components of G protein-coupled receptor complexes. RGS proteins inhibit signal transduction by increasing the GTPase activity of G protein alpha subunits, thereby driving them into their inactive GDP-bound forms. This protein selectively binds to G(z)-alpha and G(alpha)-i2 subunits, and regulates their signaling activities. Alternatively spliced transcript variants encoding different isoforms have been found for this gene. [provided by RefSeq, Sep 2011]

Protein Families: Druggable Genome

Product images:



Coomassie blue staining of purified RGS20 protein (Cat# [TP309495]). The protein was produced from HEK293T cells transfected with RGS20 cDNA clone (Cat# [RC209495]) using MegaTran 2.0 (Cat# [TT210002]).