

## Product datasheet for **TP309495**

### **RGS20 (NM\_003702) Human Recombinant Protein**

#### **Product data:**

**Product Type:** Recombinant Proteins

**Description:** Recombinant protein of human regulator of G-protein signaling 20 (RGS20), transcript variant 2, 20 µg

**Species:** Human

**Expression Host:** HEK293T

**Expression cDNA** >RC209495 protein sequence

**Clone or AA** **Red**=Cloning site **Green**=Tags(s)

**Sequence:**

MRTADGGEPAGASSPAGRVDGGLQMGSERMEMRKRQMPAAQDTPGAAPGQPGAGSRGSNACCFWCCCCS  
CSCLTVRNQEDQRPTIASHELRLADLPTWEESPAPTLEEVNAWAQSFDKLMVTPAGRNAFREFLRTEFSEE  
NMLFWMACEELKKEANKNIIIEEKARIYEDYISILSPKEVSLDSRVREVINRNMVEPSQHIFDDAQLQIY  
TLMHRDSYPRFMNSAVYKDLLQSLSEKSIEA

**TRTRPLEQLISEEDLAANDILDYKDDDDKV**

**Tag:** C-Myc/DDK

**Predicted MW:** 26.9 kDa

**Concentration:** >0.05 µg/µL as determined by microplate BCA method

**Purity:** > 80% as determined by SDS-PAGE and Coomassie blue staining

**Buffer:** 25 mM Tris-HCl, 100 mM glycine, pH 7.3, 10% glycerol

**Preparation:** Recombinant protein was captured through anti-DDK affinity column followed by conventional chromatography steps.

**Note:** For testing in cell culture applications, please filter before use. Note that you may experience some loss of protein during the filtration process.

**Storage:** Store at -80°C.

**Stability:** Stable for 12 months from the date of receipt of the product under proper storage and handling conditions. Avoid repeated freeze-thaw cycles.

**RefSeq:** [NP\\_003693](#)

**Locus ID:** 8601



[View online »](#)

UniProt ID: [O76081](#), [H9NIM5](#), [B3KSW4](#)

RefSeq Size: 1716

Cytogenetics: 8q11.23

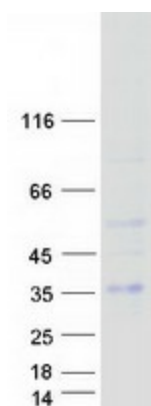
RefSeq ORF: 723

Synonyms: g(z)GAP; gz-GAP; RGSZ1; ZGAP1

**Summary:** The protein encoded by this gene belongs to the family of regulator of G protein signaling (RGS) proteins, which are regulatory and structural components of G protein-coupled receptor complexes. RGS proteins inhibit signal transduction by increasing the GTPase activity of G protein alpha subunits, thereby driving them into their inactive GDP-bound forms. This protein selectively binds to G(z)-alpha and G(alpha)-i2 subunits, and regulates their signaling activities. Alternatively spliced transcript variants encoding different isoforms have been found for this gene. [provided by RefSeq, Sep 2011]

**Protein Families:** Druggable Genome

### Product images:



Coomassie blue staining of purified RGS20 protein (Cat# TP309495). The protein was produced from HEK293T cells transfected with RGS20 cDNA clone (Cat# [RC209495]) using MegaTran 2.0 (Cat# [TT210002]).