

Product datasheet for **TP309486M**

SRPR beta (SRPRB) (NM_021203) Human Recombinant Protein

Product data:

Product Type:	Recombinant Proteins
Description:	Recombinant protein of human signal recognition particle receptor, B subunit (SRPRB), 100 µg
Species:	Human
Expression Host:	HEK293T
Expression cDNA Clone or AA Sequence:	>RC209486 protein sequence Red =Cloning site Green =Tags(s)

MASADSRRLADGGGAGGTFQPYLDTLRQELQQTDPDLLSVVAVLAVLLTLVFWKLIRSRSSQRAVLLV
GLCDSGKTLFVRLTGLYRDTQTSITDSCAVYRVNRRGNSLTLIDLPGHESLRLQFLERFKSSARAIV
FVDSAAFQREVKDVAEFLYQVLIDSMGLKNTSPFLIACNKQDIAMAKSAKLIQQLEKELNLRVTRSA
APSTLDSSTAPAQLGKKGKEFEFSQLPLKVEFLECSAKGGRGDVGSADIQDLEKWLAKIA

SGPTRTRPLEQKLISEEDLAANDILDYKDDDDKV

Tag:	C-Myc/DDK
Predicted MW:	29.5 kDa
Concentration:	>0.05 µg/µL as determined by microplate BCA method
Purity:	> 80% as determined by SDS-PAGE and Coomassie blue staining
Buffer:	25 mM Tris-HCl, 100 mM glycine, pH 7.3, 10% glycerol
Preparation:	Recombinant protein was captured through anti-DDK affinity column followed by conventional chromatography steps.
Note:	For testing in cell culture applications, please filter before use. Note that you may experience some loss of protein during the filtration process.
Storage:	Store at -80°C.
Stability:	Stable for 12 months from the date of receipt of the product under proper storage and handling conditions. Avoid repeated freeze-thaw cycles.
RefSeq:	NP_067026
Locus ID:	58477
UniProt ID:	Q9Y5M8 , Q549N5



[View online »](#)

RefSeq Size: 2880

Cytogenetics: 3q22.1

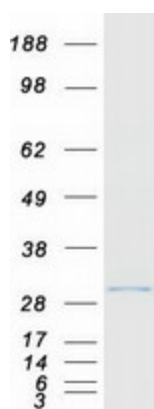
RefSeq ORF: 813

Synonyms: APMCF1; SR-beta

Summary: The protein encoded by this gene has similarity to mouse protein which is a subunit of the signal recognition particle receptor (SR). This subunit is a transmembrane GTPase belonging to the GTPase superfamily. It anchors alpha subunit, a peripheral membrane GTPase, to the ER membrane. SR is required for the cotranslational targeting of both secretory and membrane proteins to the ER membrane. [provided by RefSeq, Jul 2008]

Protein Families: Druggable Genome, Transmembrane

Product images:



Coomassie blue staining of purified SRPRB protein (Cat# [TP309486]). The protein was produced from HEK293T cells transfected with SRPRB cDNA clone (Cat# [RC209486]) using MegaTran 2.0 (Cat# [TT210002]).