

Product datasheet for **TP309486**

SRPR beta (SRPRB) (NM_021203) Human Recombinant Protein

Product data:

| | |
|---------------------------------------|---|
| Product Type: | Recombinant Proteins |
| Description: | Recombinant protein of human signal recognition particle receptor, B subunit (SRPRB), 20 µg |
| Species: | Human |
| Expression Host: | HEK293T |
| Expression cDNA Clone or AA Sequence: | >RC209486 protein sequence Red =Cloning site Green =Tags(s) |

MASADSRRLADGGGAGGTFQPYLDTLRQELQQTDPDLLSVVAVLAVLLTLVFWKLIRSRSSQRAVLLV
GLCDSGKTLFVRLTGLYRDTQTSITDSCAVYRVNNNRGNSLTLDLPGHESLRLQFLERFKSSARAIV
FVDSAAFQREVKDVAEFLYQVLIDSMGLKNTSPFLIACNKQDIAMAKSAKLIQQQLEKELNLTNRVTRSA
APSTLDSSSTAPAQLGKKGKEFEFSQLPLKVEFLECSAKGGRGDVGSADIQDLEKWLAKIA

SGPTRTRPLEQKLISEEDLAANDILDYKDDDDKV

| | |
|----------------|--|
| Tag: | C-Myc/DDK |
| Predicted MW: | 29.5 kDa |
| Concentration: | >0.05 µg/µL as determined by microplate BCA method |
| Purity: | > 80% as determined by SDS-PAGE and Coomassie blue staining |
| Buffer: | 25 mM Tris-HCl, 100 mM glycine, pH 7.3, 10% glycerol |
| Preparation: | Recombinant protein was captured through anti-DDK affinity column followed by conventional chromatography steps. |
| Note: | For testing in cell culture applications, please filter before use. Note that you may experience some loss of protein during the filtration process. |
| Storage: | Store at -80°C. |
| Stability: | Stable for 12 months from the date of receipt of the product under proper storage and handling conditions. Avoid repeated freeze-thaw cycles. |
| RefSeq: | <u>NP_067026</u> |
| Locus ID: | 58477 |
| UniProt ID: | <u>Q9Y5M8</u> , <u>Q549N5</u> |



[View online »](#)

RefSeq Size: 2880

Cytogenetics: 3q22.1

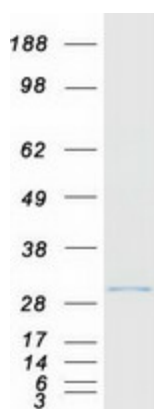
RefSeq ORF: 813

Synonyms: APMCF1; SR-beta

Summary: The protein encoded by this gene has similarity to mouse protein which is a subunit of the signal recognition particle receptor (SR). This subunit is a transmembrane GTPase belonging to the GTPase superfamily. It anchors alpha subunit, a peripheral membrane GTPase, to the ER membrane. SR is required for the cotranslational targeting of both secretory and membrane proteins to the ER membrane. [provided by RefSeq, Jul 2008]

Protein Families: Druggable Genome, Transmembrane

Product images:



Coomassie blue staining of purified SRPRB protein (Cat# TP309486). The protein was produced from HEK293T cells transfected with SRPRB cDNA clone (Cat# [RC209486]) using MegaTran 2.0 (Cat# [TT210002]).