

## Product datasheet for **TP309484M**

### KLHL13 (NM\_033495) Human Recombinant Protein

#### Product data:

Product Type:	Recombinant Proteins
Description:	Recombinant protein of human kelch-like 13 (Drosophila) (KLHL13), 100 µg
Species:	Human
Expression Host:	HEK293T
Expression cDNA	>RC209484 protein sequence
Clone or AA Sequence:	Red=Cloning site Green=Tags(s)

MPLKWKTSSPAIWKFPVPLKTSRSTPLSPAYISLVEEEDQHMKLSLGGSEMGLSSHLQSSKAGPTRIFT  
SNTHSSVVLQGFQDLRLEGLLCDVTLMPGDTDDAFVHRVMMASADYFKAMFTGGMKEQDLMCIKLGHV  
SKVGLRKIIDFIYTAKLSLNDNLQDTLEAASFLQILPVLDFCKVFLISGVTLDNCVEVGRIANTYNLTE  
VDKYVNSFVLKNFPALLSTGEFLKLPFERLAFVLSSNSLKHCTELELFKATCRWLRLEEPRMDFAAKLMK  
NIRFPLMTPQELINYVQTVDFMRTDNTCVNLLLEASNYQMMPYMQPVMQSDRTAIRSDTTHLVTLGGVLR  
QQLVVSKELRMYDEKAHEWKS LAPMDAPRYQHGI AVIGNFLYVGGQS NYDTK GKTAVDTVFRFDPRYNK  
WMQVASLNEKRTFFHLSALKGYLYAVGGRNAAGELPTVECYNPRTNEWTYVAKMSEPHYGHAGTVYGGVM  
YISGGITHDTFQKELMCFDPDTDKWIQKAPMTTVRGLHCMCTVGERLYVIGGNHFRGTSYDDVLSCEYY  
SPILDQWTPIAAMLRGQSDVGVAVFENKIYVGGYSWNNRCMVEIVQKYPDPKDEWHKVFDPESLGGIR  
ACTLTVFPPEETTPSPSRESPLSAP

TRTRPLEQKLISEEDLAANDILDYKDDDDKV

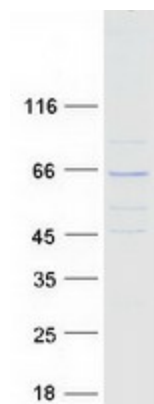
Tag:	C-Myc/DDK
Predicted MW:	73.7 kDa
Concentration:	>0.05 µg/µL as determined by microplate BCA method
Purity:	> 80% as determined by SDS-PAGE and Coomassie blue staining
Buffer:	25 mM Tris-HCl, 100 mM glycine, pH 7.3, 10% glycerol
Preparation:	Recombinant protein was captured through anti-DDK affinity column followed by conventional chromatography steps.
Note:	For testing in cell culture applications, please filter before use. Note that you may experience some loss of protein during the filtration process.
Storage:	Store at -80°C.



[View online »](#)

<b>Stability:</b>	Stable for 12 months from the date of receipt of the product under proper storage and handling conditions. Avoid repeated freeze-thaw cycles.
<b>RefSeq:</b>	<a href="#">NP_277030</a>
<b>Locus ID:</b>	90293
<b>UniProt ID:</b>	<a href="#">Q9P2N7</a> , <a href="#">Q96HC9</a>
<b>RefSeq Size:</b>	3991
<b>Cytogenetics:</b>	Xq24
<b>RefSeq ORF:</b>	1965
<b>Synonyms:</b>	BKLHD2
<b>Summary:</b>	This gene encodes a BTB and kelch domain containing protein and belongs to the kelch repeat domain containing superfamily of proteins. The encoded protein functions as an adaptor protein that complexes with Cullin 3 and other proteins to form the Cullin 3-based E3 ubiquitin-protein ligase complex. This complex is necessary for proper chromosome segregation and completion of cytokinesis. Alternate splicing results in multiple transcript variants. [provided by RefSeq, Mar 2010]
<b>Protein Pathways:</b>	Ubiquitin mediated proteolysis

### Product images:



Coomassie blue staining of purified KLHL13 protein (Cat# [TP309484]). The protein was produced from HEK293T cells transfected with KLHL13 cDNA clone (Cat# [RC209484]) using MegaTran 2.0 (Cat# [TT210002]).