

## Product datasheet for **TP309481L**

### ARMC6 (NM\_033415) Human Recombinant Protein

#### Product data:

Product Type:	Recombinant Proteins
Description:	Recombinant protein of human armadillo repeat containing 6 (ARMC6), 1 mg
Species:	Human
Expression Host:	HEK293T
Expression cDNA Clone or AA Sequence:	>RC209481 protein sequence <b>Red</b> =Cloning site <b>Green</b> =Tags(s)

MVSKRIAQETFDAAVRENIEEFAMGPPEAVKEAVEQFESQGVDSLNIKTAPKVSADGSQEPHTDILQML  
SDLQESVASSRPQEVSAYLTRFCDQCKQDKACRFLAAQKGAYPIIFTAWKLATAGDQGLLLQSLNALSVL  
TDGQPDLLDAQGLQLLVATLTQNADEADLTCSGIRCVRHACKHEQNRQDLVKAGVPLLTGAITHHGH  
TDVVREACWALRVMTFDDDIRVPGHAHNHAKMIVQENKGLKVLIEATKAFLDNPGLSELCGTSLRLAI  
RNEFCQEVVDLGGLSILVSLADCNDHQMRDQSGVQELVKQVLSTLRAIAGNDDVKDAIVRAGGTESIVA  
AMTQHLTSPQVCEQSCAALCFLALRKPDNSRIIVEGGGAVAALQAMKAHPQKAGVQKQACMLIRNLVAHG  
QAFSPILDLGAEALIMQARSAHRDCEDVAKAALRDLGCHVELRELWTGQRGNLAP

**TRTRPLEQKLISEEDLAANDILDYKDDDDKV**

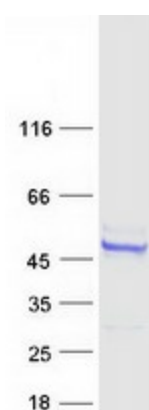
Tag:	C-Myc/DDK
Predicted MW:	51.4 kDa
Concentration:	>0.05 µg/µL as determined by microplate BCA method
Purity:	> 80% as determined by SDS-PAGE and Coomassie blue staining
Buffer:	25 mM Tris-HCl, 100 mM glycine, pH 7.3, 10% glycerol
Preparation:	Recombinant protein was captured through anti-DDK affinity column followed by conventional chromatography steps.
Note:	For testing in cell culture applications, please filter before use. Note that you may experience some loss of protein during the filtration process.
Storage:	Store at -80°C.
Stability:	Stable for 12 months from the date of receipt of the product under proper storage and handling conditions. Avoid repeated freeze-thaw cycles.
RefSeq:	<u><a href="#">NP_219483</a></u>



[View online »](#)

Locus ID:	93436
UniProt ID:	<a href="#">Q6NXE6</a>
RefSeq Size:	2397
Cytogenetics:	19p13.11
RefSeq ORF:	1428
Synonyms:	R30923_1
Summary:	The function of this gene's protein product has not been determined. A related protein in mouse suggests that this protein has a conserved function. Two transcript variants encoding different isoforms have been found for this gene. [provided by RefSeq, Nov 2010]
Protein Families:	Stem cell - Pluripotency

### Product images:



Coomassie blue staining of purified ARMC6 protein (Cat# [TP309481]). The protein was produced from HEK293T cells transfected with ARMC6 cDNA clone (Cat# [RC209481]) using MegaTran 2.0 (Cat# [TT210002]).