

## Product datasheet for TP309476L

### Collagen VI (COL6A2) (NM\_001849) Human Recombinant Protein

#### Product data:

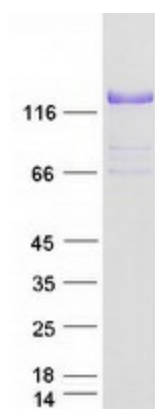
Product Type:	Recombinant Proteins
Description:	Recombinant protein of human collagen, type VI, alpha 2 (COL6A2), transcript variant 2C2, 1 mg
Species:	Human
Expression Host:	HEK293T
Expression cDNA Clone or AA Sequence:	>RC209476 protein sequence <b>Red</b> =Cloning site <b>Green</b> =Tags(s)
	<p>MLQGTCSVLLWLGILGAIQAQQQEVISPDTERNNNCPEKTDCEPIHVYFVLDTSSEVTMQSPTDILLFHM KQFVPQFISQLQNEFYLDQVALSWRYGGLHFSDQVEVFSPPGSDRASFIKNLQGISSFRRGTFTDCALAN MTEQIRQDRSKGTVHFAVITDGHVTGSPCGGIKQAERAREEGIRLFAVAPNQNLEQGLRDIASPTHE LYRNDYATMLPDSTEIDQDTINRIIKVMKHEAYGECYKVSLEIPGPSGPKGYRGQKGAKNMGEPGEPG QKGRQGDPIEGPIGFPKGVPGFKGEKGEFGADGRKGAPLAGKNGTDGQKGLGRIGPPGCKGDPGN RGPDPGYPGEAGSPGERGDQGGKGDPRPGRGPPGEIGAKGSKGYQGNNAGSPGVKGAKGPPGPRGPK GEPGRRGDPGKSGSDGPKGEKGDPEGPRGLAGEVGNKGAKGDRGLPGPRGPQALGEPGKQGSRG DPGDAGPRGDSGQPGPKGDPGRPGFSYPGRGAPGEKGEPPRGPPEGGRGDFLKGEPGRKGEKGEPADP GPPGEPGPRGPRGVPGEPEGPPGDPGLTECDVMTYVRETCCDCCKRCGALDVVFVIDSSESIGYTN FTLEKNFVINVNRLGAIKDPKSETGTRVGVVQYSHEGTFEAIQLDDERIDSLSSFKEAVKNLEWIAGG TWTPSALKFAYDRLIKESRRQKTRVFAVITDGRHDPDRDDLNLRALCDRDVTVAIGIDMFHEKHESE NLYSIACDKPQQVRNMTLFSDLVAEKFIDDMEDVLCPPDQIVCPDLPCQTELSVAQCTQRPVDIVFLLDG SERLGEQNFHKARRFVEQVARRLTLARRDDPLNARVALLQFGGPEQQVAFPLSHNLTAIHEALETQY LNSFSHVAGVHAINAIVRSRGGARRHAELSFVFLTDGVTGNDLHESAHSMRKQNVVPTVLALGSDV DMDVLTTLTSLGDRAAVFHEKDYDSLAPGFFDRFIRWIC</p> <p><b>SGP</b>TRTRPLEQKLISEEDLAANDILDYKDDDDKV</p>
Tag:	C-Myc/DDK
Predicted MW:	106.5 kDa
Concentration:	>0.05 µg/µL as determined by microplate BCA method
Purity:	> 80% as determined by SDS-PAGE and Coomassie blue staining
Buffer:	25 mM Tris-HCl, 100 mM glycine, pH 7.3, 10% glycerol



[View online »](#)

<b>Preparation:</b>	Recombinant protein was captured through anti-DDK affinity column followed by conventional chromatography steps.
<b>Note:</b>	For testing in cell culture applications, please filter before use. Note that you may experience some loss of protein during the filtration process.
<b>Storage:</b>	Store at -80°C.
<b>Stability:</b>	Stable for 12 months from the date of receipt of the product under proper storage and handling conditions. Avoid repeated freeze-thaw cycles.
<b>RefSeq:</b>	<a href="#">NP_001840</a>
<b>Locus ID:</b>	1292
<b>UniProt ID:</b>	<a href="#">P12110</a> , <a href="#">A0A384MDP3</a>
<b>RefSeq Size:</b>	3455
<b>Cytogenetics:</b>	21q22.3
<b>RefSeq ORF:</b>	3057
<b>Synonyms:</b>	BTHLM1; PP3610; UCMD1
<b>Summary:</b>	This gene encodes one of the three alpha chains of type VI collagen, a beaded filament collagen found in most connective tissues. The product of this gene contains several domains similar to von Willebrand Factor type A domains. These domains have been shown to bind extracellular matrix proteins, an interaction that explains the importance of this collagen in organizing matrix components. Mutations in this gene are associated with Bethlem myopathy and Ullrich scleroatonic muscular dystrophy. Three transcript variants have been identified for this gene. [provided by RefSeq, Jul 2008]
<b>Protein Families:</b>	Secreted Protein
<b>Protein Pathways:</b>	ECM-receptor interaction, Focal adhesion

### Product images:



Coomassie blue staining of purified COL6A2 protein (Cat# [TP309476]). The protein was produced from HEK293T cells transfected with COL6A2 cDNA clone (Cat# [RC209476]) using MegaTran 2.0 (Cat# [TT210002]).